



COLÁISTE CHEATHARLACH  
NAOMH PÁDRAIG

CARLOW COLLEGE  
ST. PATRICK'S

# Shape Your Future

Undergraduate Prospectus 2024/25

[www.carlowcollege.ie](http://www.carlowcollege.ie)





# Shape Your Future

**Our Student  
Recruitment Team  
are here to help**

## **Aoife Fitzpatrick**

Senior Student Recruitment Coordinator  
afitzpatrick@carlowcollege.ie  
Contact us in the office at 059 915 3296  
or slo@carlowcollege.ie

### **We can help you with:**

- School visits and careers events
- Subject specific workshops
- Taster sessions
- Campus Tours
- Open Days
- Advice on Carlow College courses



## Come visit us

### **Join us at our next Open Day**

#### **Undergraduate Open Day**

Thursday, 26th October 2023, 11am – 3pm

#### **CAO Choices Open Evening (Online)**

Wednesday, 24th January 2024, 6pm - 8pm

#### **Spring Open Day**

Thursday, 7th March 2024, 10am - 1pm

### **Connect with us online**

Get the most up-to-date CAO information  
at [www.carlowcollege.ie/cao](http://www.carlowcollege.ie/cao)

Follow @carlowcollegestpatricks on social media





# Undergraduate Courses

Course	CAO Code	Level	CAO Points*	Entry Req.	Years	Popular Career Pathways	WebPage
B.A. in Applied Social Studies (Professional Social Care)*	PC404	7	190-367	1,3	3	<ul style="list-style-type: none"><li>• Social Care Worker (CORU approved) in a wide range of settings.</li><li>• Special Needs Assistant.</li><li>• Early Childhood Education.</li></ul>	carlowcollege.ie/pc404
B.A. (Hons) in Arts & Humanities*	PC410	8	252-488	1	3	<div><div><ul style="list-style-type: none"><li>• Teaching (primary or secondary) ^</li><li>• Heritage, Arts &amp; Culture.</li><li>• PR Marketing &amp; Communications.</li><li>• Copywriting &amp; Journalism.</li></ul></div><div><ul style="list-style-type: none"><li>• Travel &amp; Tourism.</li><li>• Librarianship &amp; Archives.</li><li>• Psychology (through completion of PSI accredited Masters degree).</li></ul></div></div>	carlowcollege.ie/pc410
B.A. (Hons) in English & History*	PC411	8	242-544	1	3	<div><div><ul style="list-style-type: none"><li>• Teaching (primary or secondary) ^</li><li>• Heritage, Arts &amp; Culture.</li></ul></div><div><ul style="list-style-type: none"><li>• PR, Marketing &amp; Communications.</li><li>• Copywriting &amp; Journalism.</li></ul></div></div>	carlowcollege.ie/pc411
B.A. (Hons) in Psychology	PC414	8	298-440	2	3	<div><div><ul style="list-style-type: none"><li>• Clinical Psychology.</li><li>• Educational Psychologist.</li><li>• Forensic Psychologist.</li></ul></div><div><ul style="list-style-type: none"><li>• Behavioural Psychologist.</li><li>• Counselling Psychologist.</li><li>• Guidance Counsellor/Careers Advisor.</li></ul></div></div> <p>Note: postgraduate study is required to obtain PSI registration</p>	carlowcollege.ie/pc414
B.A. (Hons) in Applied Social Studies (Professional Social Care)*	N/A	8	Add-On	3	1	<div><div><ul style="list-style-type: none"><li>• Social Care Worker in a wide range of settings.</li><li>• Research and Postgraduate study.</li></ul></div><div><ul style="list-style-type: none"><li>• Leadership positions in community-based and residential settings.</li></ul></div></div>	carlowcollege.ie/pc404a

\* The lower number is the CAO cut-off and the higher is the highest points achieved by a student who accepted the course in 2023.  
^ Career pathways for teaching require students to complete a Professional Masters in Education (primary or post-primary) in order to register with the Teaching Council.  
+ Course is currently going through cyclical review and revalidation and may be subject to change. Please check Carlow College website for latest information.

### Leaving Cert Entry Requirements

**Level 7:** 5O6/H7 (O6/H7 English, Irish or Foreign Language)  
**Level 8:** Min. 2H5 & 4H7/O6 (O6/H7 English, Irish or Foreign Language)

### Entry Requirements

- 1. Maths Not Required
- 2. Maths O6 Required
- 3. Garda Vetting Required



“The variety of subjects within the Arts & Humanities degree really appealed to me. The main attraction was within the Catechetics module as I had the opportunity to go to schools for teaching placement. I was not 100% sure if I wanted to become a teacher, so the opportunity to have a taste for the field was very beneficial for me”

**Rachel Broughan**  
BA (Hons) in Arts & Humanities



“I chose to study at Carlow College because it is such a small, tight-knit community. Everybody knows everyone, and the staff make their best efforts to engage with students and try to get to know them. In my course, the practice placement has given me a huge insight into what lies ahead for me in my career, as well as exploring particular areas in social care which I may be interested in working.”

**Gary Dowling**  
BA (Hons) in Applied Social Studies (Professional Social Care)





# Contents

Welcome	Page 6
Why Choose Carlow College	Page 8
Where We Are	Page 10
Our Campus	Page 12
Our Libraries	Page 14
Explore Carlow	Page 16
Accommodation Options	Page 18
Cost of Living	Page 20
Transition to College	Page 22
Students' Union	Page 24
Sports in Carlow	Page 26
Student Supports	Page 28
Academic Supports	Page 30
Work Experience	Page 32
Study Abroad	Page 34
Careers & Graduate Skills	Page 36
Pathways to Teaching	Page 38

<b>What to Study</b>	
Undergraduate Courses	Page 40-51
<b>Getting Started</b>	
Part-Time Study	Page 52
How to Apply	Page 56
Fees, Grants & Scholarships	Page 62
Key Contacts	Page 64





# Welcome to Carlow College

Welcome to our new prospectus for 2024/25. I hope you find all the information you need to help you choose Carlow College for your studies. Inside you will see that when you join Carlow College, you become part of a college community – a community that prioritises each individual to help them grow and succeed.

The decision to undertake third-level study is an important one. It is a choice that will challenge you, shape you as a person and lead you into an exciting future. Across all our programmes, we strive to help you develop as an individual, a thinker and a future innovator. As an institution, we are on a journey to become leaders in sustainability and social awareness. As such, our programmes and actions are shaped by the UN Sustainable Development Goals. We understand our role in creating awareness and driving change, so through leading by example, we encourage our students to be part of the solution.

Our historic campus is full of life. Studying in a close-knit community has its unique advantages, such as having one-to-one contact with your lecturers; quick and easy access to student supports; the opportunity to represent the student voice at various levels of the College – and to be heard!



Our lecturers are highly qualified, committed and enthusiastic individuals. Many of them have national and international reputations in their fields of study, which means that you will be learning about the latest research and thinking in your chosen area.

We are committed to equality, diversity and inclusion for all students and staff, regardless of identity and background. In 2021, Carlow College achieved the Athena SWAN Bronze Award which recognises the continued work undertaken by the College to promote gender equality.

Each year, our graduates head off into a wide range of exciting career paths and further study opportunities – 95% securing employment or engaging in further study within 9 months of graduation. There is no one-size-fits-all approach – our programmes allow you to explore your interests and learn about the range of career paths you can take, while also helping to develop the practical skills needed to succeed in any path you take.

The best way to learn about a college is to hear from the students and graduates themselves and throughout the prospectus, you will find testimonials from our students. I also encourage you to go beyond our prospectus and come to visit us. See for yourself what makes Carlow College so unique.

**I look forward to welcoming you to Carlow College, St. Patrick's.**

**Dr. Margaret Murphy**

**Assistant Registrar for Academic Affairs**

# Fáilte go Coláiste Cheatharlach.

Fáilte chuig an réamheolaire nua do 2024/25. Tá súil agam go bhfaighidh tú an t-eolas atá uait chun Coláiste Cheatharlach a roghnú le staidéar a dhéanamh ann. Feicfidh tú go bhfuil tú i do bhall de phobal coláiste nuair a roghnaíonn tú Coláiste Cheatharlach – pobal a thugann tosaíocht do gach éinne chun cabhrú leo fás agus dul chun cinn a dhéanamh.

Is cinneadh an-tábhachtach é staidéar tríú-leibhéal a dhéanamh. Is rogha é a thabharfaidh dúshlán duit, a mhúnlóidh tú agus a stiúrfaidh do thodhchaí. Thar chúrsaí uile an Choláiste, déanaimid ár ndícheall cabhrú leat forbairt mar dhuine aonair, mar smaointeoir agus mar nuálaí don todhchaí. Mar institiúid, táimid ar aistear le bheith inár gceannairí i leith inbhuanaitheachta agus feasacht shóisialta. Mar sin, tá ár gclár go léir múnlaíthe ar aon dul le Spriocanna Forbartha Inbhuanaithe na NA. Tuigimid an ról atá againn i dtaobh aithne a chruthú agus athrú a chur chun cinn; mar sin, trí shampla a thaispeáint, molaimid dár micléinn a bheith mar chuid den réiteach.

Tá ár gcampas stairiúil lán de bheatha. Tá buntáistí uathúla ag baint le staidéar i bpobal dlúth, mar shampla caidreamh duine le duine a bheith agat le do léachtóirí; teacht tapaigh agus éasca ar thacaíochtaí mac léinn; deis guth an mhic léinn a léiriú ag leibhéil éagsúla an choláiste – agus cluas éisteachta a fháil!

Is daoine ardcháilithe, tiomanta agus díograiseacha iad ár léachtóirí. Tá clú agus cáil náisiúnta agus idirnáisiúnta ar formhór acu ina réimsí staidéir. Ciallaíonn sé sin go mbeidh tú ag foghlaim faoin taighde agus an smaointeoireacht is déanaí i do rogha réimse staidéir.



Táimid tiomanta do chomhionannas, éagsúlacht agus cuimsitheacht do gach mac léinn agus ball foirne, beag beann ar fhéiniúlacht agus cúlra. Sa bhliain 2021, bronnadh an 'Gradam Cré-Umha Athena Swan' ar Choláiste Cheatharlach. Aithníonn an gradam seo go bhfuil obair leanúnach idir lámha chun comhionannas inscne a chur chun cinn sa Choláiste.

Gach bhliain, leanann ár mic léinn iarchéime ar aghaidh chuig raon leathan de phostanna iontacha nó chun staidéar breise a dhéanamh. Laistigh de 9 mí dá gcéimeanna a bhaint amach, faigheann 95% díobh fostaíocht den scoth nó déanann siad staidéar breise. Níl gach duine mar an gcéanna anseo - ligeann ár gclár duit do spéis a fhiosrú agus foghlaim faoin raon bealaí gairme atá ar fáil agus, ag an am céanna, cabhraíonn siad leat scileanna praiticiúla riachtanacha a fhorbairt ionas go n-éireoidh leat in aon raon a ghlacann tú.

Chun tuilleadh a fhoghlaim faoin gColáiste, b'fhearr duit labhairt le mic léinn reatha agus iarchéime iad féin agus, tríd an réamheolaire seo, gheobhaidh tú teistiméireachtaí ónár gcuid mic léinn. Chomh maith leis sin, molaim duit dul níos faide ná an réamheolaire seo agus cuairt a thabhairt orainn. Feicfidh tú duit féin na nithe a thugann uathúlacht do Choláiste Cheatharlach.

**Táim ag tnúth go mór le fáilte a chur romhat chuig Coláiste Cheatharlach, Naomh Pádraig.**

**Dr. Margaret Murphy**

**Cláraitheoir Cúnta do Ghnóthaí Acadúla**



# Why Choose Carlow College

**Established in 1782, Carlow College, St Patrick's has a long history of third level education. Our story began as a lay college and seminary before transforming into the vibrant, liberal arts community you see today.**

We know that careers, and the pathways to achievement come in all shapes and sizes. That's why our approach to third level education is personal, supportive and focused on the individual. Our College is opening horizons, providing relevant and practical third level courses ranging from humanities to psychology, social care work, community/advocacy and many more.

Our students are encouraged to express creativity and individuality in all aspects of their college experience – breaking the mould to shape their futures.

## Future Change Makers

Our courses are designed to encourage students to become independent thinkers, to challenge ideas and to go on to make a positive impact on our society. Our staff and students are actively involved in advocacy, community development and arts' initiatives.

## We Make It Personal

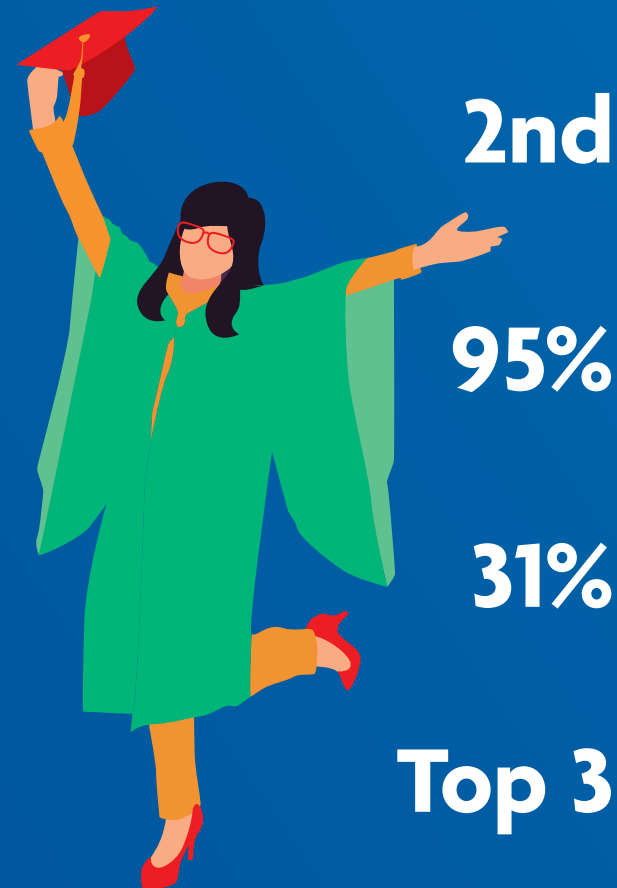
Students are at the centre of everything we do. Our class sizes are small and inclusive, meaning you receive personal attention and lecturers will know you by name.

## Student Supports

We have a comprehensive range of FREE supports for students. These include academic supports, writing development, disability supports, chaplaincy, health service, counselling, careers support and our dedicated PAWS officer.

## Cultural Heart

We are located in the heart of the Cultural Quarter in Carlow town. On our campus grounds is VISUAL, Centre for Contemporary Art, a world class centre of arts and theatre, and we play host to a range of festivals throughout the year, including the popular Carlow Arts Festival.



**2nd**

oldest third level institution in Ireland

**95%**

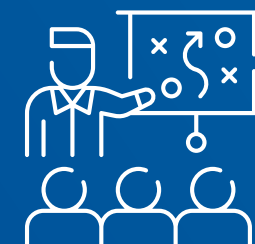
of graduates in Employment or Further Study<sup>□</sup>

**31%**

cheaper average rents in Carlow than the national average<sup>○</sup>

**Top 3**

third cheapest student town for entertainment<sup>▮</sup>



### Small & inclusive class sizes

1:17 Student-to-Lecturer ratio meaning you receive personal attention and lecturers know you by name



**No limit** on intake of Mature students

□ Graduate Destinations Survey 2023

○ Residential Tenancies Board Rent Index Q3 2022

▮ Ireland's Cheapest Student Towns, Switcher.ie, 2023



# Where We Are



**Carlow Train Station:**  
5-minute walk to campus

Dublin: 1 hour  
Athy: 13 minutes  
Kildare town: 30 minutes  
Kilkenny: 30 minutes  
Waterford: 55 minutes



**Carlow Coach Station:**  
10 minute walk to campus

Arklow: 1.5 hours  
Kilkenny: 50 minutes  
Wexford: 1.5 hours  
Naas: 1 hour  
Portlaoise: 1 hour



**Parking on Campus:**  
By Car

Kilkenny: 30 minutes  
Cork: 2.25 hours  
Limerick: 1.75 hours  
Galway: 2.5 hours



"I chose the College as the welcoming campus is only an hour from home so I can have a fun college experience without being too far from family."

**Emily Hurley – Waterford**  
**B.A. (Hons) in English & History**





# Our Campus

**Our historic campus is located in the heart of Carlow town, and forms the central hub of Carlow's Cultural Quarter.**

## Location

Located in the centre of Carlow town, our campus is a 5-minute walk from Carlow train station and a 10-minute walk from Carlow Coach Station which are serviced by regular routes from Waterford, Wexford, Wicklow, Laois, Kilkenny, Kildare and Dublin.

## Community

If there is one thing you can be certain of, it's that when you join Carlow College you become part of a close-knit community. You will get to know all your classmates, lecturers and support staff on a first-name basis.

## Academics

Our academic staff are passionate about their subjects and about helping bring out the best in our students. A number of our academics are regarded as leaders in their respective fields and are actively engaged in research, advocacy and publishing. But they also come from a wide range of backgrounds, meaning they understand the challenges many students face in transitioning to third-level and are on-hand to support you.



## Creativity

Located on our grounds, VISUAL is home to the largest single-gallery space in Ireland and a 350-seat theatre. It produces programmes of both national and international contemporary art, new work by leading artists, up to the minute digital media, artist talks, tours, workshops and intimate music gigs in the bar, with theatre, film, dance and comedy all happening in the theatre. We are also the home of the Carlow Arts Festival.

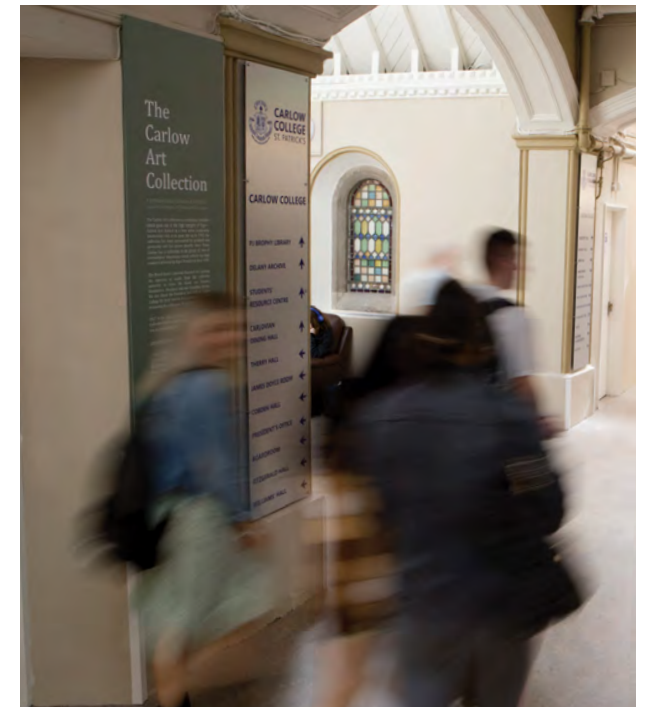


## Equality, Diversity & Inclusion

In 2021, we were delighted to be awarded the Athena SWAN Bronze Award. The Athena SWAN charter is a framework used worldwide to support and promote equality, diversity and inclusion, including gender equality, within higher education. The award recognises the College's achievements and commitment in this area.

## Carlow Art Collection

Our campus is proudly home to the Carlow Art Collection which attracts visitors both nationally and internationally each year. The collection boasts the work of numerous internationally acclaimed artists and at its core is a collection of invaluable drawings by Carlow's most famous artist and past Carlow College student, Frank O'Meara (1853-1888).





# Our Libraries

## PJ Brophy Library

Located in the heart of the campus, the PJ Brophy Library is housed inside the former Sacred Heart Chapel, built in 1888. This facility is central to your learning activities, providing a wide range of services and resources to support the learning, teaching and research activities of the College. The library is open five days a week with late openings Monday – Thursday during term time. The librarians are available to help you at any time and there is also a Library Self-Service desk.

## Getting Started

Beginning with tours during Induction Week, our Library staff are available to help you throughout your time at Carlow College. The team offer training on our resources throughout the year and are always available to provide you with the help you need to find, evaluate and manage information.

## Collections

Our main Library provides access to a large collection of printed books and eBooks which can be accessed from the College or online. We also offer access to Academic Search Premier and other online databases offering journal articles, reports, official publications, theses, and newspapers. These can also be accessed either in the library or through the library catalogue online.

## Keeffe Library

The Keeffe Library is the original Carlow College library, but is now home to our Research collections. It houses 10,000 books including early print material dating from the eighteenth century upwards, with a particular strength in Irish history.

**20,000+**  
Printed Books

**170,000+**  
e-Books & e-Journals



**Inter-Library Loan Service**

**Late Opening during Term Time**

## Study Spaces

Upstairs is the traditional area for focused quiet study with access to computers, printing and photocopying. There are also group study spaces to sit and discuss group projects with your classmates.





# Explore Carlow

Located in the sunny South-East, Carlow combines a thriving student town with unspoiled landscape. The county is home to picturesque villages, meandering rivers, rolling hills, all echoing the colourful tales of our people, past and present.

### Food

From local farmers markets to cafes and restaurants to suit all tastes and budgets, Carlow holds its own when it comes to the culinary scene. You are spoilt for choice with tapas, farm-to-fork, Italian, Thai and even a local, Wetherspoons to suit a student budget.

### Nightlife

Carlow is a bustling, fun and lively student town with a student population of over 7,000. There is everything from the humble pub to boutique cocktail bars, live music venues to thriving nightclubs. It is also home to two multi-screen cinema complexes.

### Shopping

Carlow is home to a number of shopping centres and retail parks, with high street brands such as Penneys, Next, New Look, Jack Jones, JD Sports as well as a diverse range of independent shops to suit all tastes and budgets. All the main supermarket chains are in town.



### Arts & Culture

Our campus is home to VISUAL Centre for Contemporary Art & The George Bernard Shaw Theatre, where you'll find a diverse calendar of exhibitions, theatre performances and music gigs. During Summer, Carlow and its surrounds comes alive with a thriving calendar of festivals with everything from Borris House Festival of Writing & Ideas, Carlow Arts Festival, Carlow Pride Fest and the popular Kilkenny Cat Laughs just over the border in Kilkenny.

### Outdoors

One of the true treats of life in Carlow is the opportunity to explore its natural beauty. From walking trails to exciting water activities along the River Barrow, you can be immersed in nature within minutes of town. Take a hike up Mount Leinster to take in sweeping views across the South East or a weekend drive to St Mullins for a riverside walk and visit the monastic site.



### What's on in Carlow & surrounds

Event	Date
Carlow Farmers' Market	Weekly
St Patrick's Day Parade	March
Punchestown Festival	April
Kilkenny Rhythm n Roots Festival	May
Borris House Festival of Writing & Ideas	June
Carlow Arts Festival	June
Kilkenny Cat Laughs	June
Carlow Garden Festival	July
Carlow Pride Fest	July
Kilkenny Arts Festival	August
Culture Night	September
Savour Kilkenny	October
Carlow Live & Local	November
Kilkenomics Festival	November
SUBTITLE European Film Festival	November
Christmas Markets	December





# Accommodation Options

Moving away from home can be stressful and challenging, so finding the right accommodation is important to help you build your home away from home.

## Affordability

Not only is Carlow one of the most vibrant student towns in Ireland, it is also considerably cheaper to live here **with average rents 31% cheaper than the national average** (Daft.ie, third quarter 2022). Any savings you can make on your accommodation means you have more to enjoy your student life.

## Types of Accommodation:

### Student Village

Carlow is serviced by HATCH Student Living which offers vibrant living spaces for students at just a 5-minute walk to campus. These are self-catering student apartments with en suite or shared (with just 1 other student) bathrooms and an apartment of new friends. Full details are available at [hatchstudents.ie](https://hatchstudents.ie)

## Digs

This is a popular choice with students, particularly when moving away from home for the first time. Digs is where you live with a local family in their home. Some may include meals, some may not. A great place to start your search is at [collegecribs.ie](https://collegecribs.ie)

## Private Rental

There is a large selection of private apartments and houses around Carlow. This is organised directly through private landlords.

## Best Places to Search Private Rentals

- DAFT – [daft.ie](https://daft.ie)
- Carlow Property Management – [carlowproperty.ie](https://carlowproperty.ie)
- Let.ie
- Maher Property Advisors – [maherproperty.ie](https://maherproperty.ie)

## On-Campus Accommodation

Lennon House is located on Carlow College campus. It offers accommodation for International and Erasmus students studying with us. It is not available for Irish students.





# Cost of Living

**Taking some time to research the cost of living in your study destination is an important part of the decision process. Carlow has been rated as the third cheapest student town in Ireland when it comes to entertainment\*, so you can enjoy student life without breaking the bank.**

One of the most important factors to consider when choosing where to study is the financial side of things. And this doesn't only mean the cost of your student fees, but also means all the other living expenses you'll have week to week.

## Accommodation

If you make the move to Carlow, there are range of accommodation options available (see pg 16). The average rental in Carlow is 31% cheaper than the national average (Daft.ie, third quarter, 2022), so you can make a significant saving on your accommodation costs by choosing Carlow. Digs are generally around €100 - €120 per week for a private room and student villages average around €130 per week.



## Travel Costs

If you choose to commute, Carlow is serviced by train and bus services that connect to Wicklow, Wexford, Waterford, Kilkenny, Kildare, Laois and Dublin. Student fares in the Dublin Heuston – Waterford line range from approx €30 - €90 per week (or €91 - €300 per month) depending on where you commute from. Student bus fares from surrounding towns and counties range from approx €20 - €50 per month, depending on the distance. And, for those driving to campus, there is loads of parking on campus for a small annual fee of €30.

## Food and Drink

There are plenty of student-friendly places to dine out within Carlow town. Our students can choose to shop at all the major supermarkets if you are developing your cooking skills at home. Within the campus, the Carlovian Dining Hall offers subsidised tea/coffee and pastries, all-day breakfast for just €4.95, wide selection of sandwiches and hot food options and vending machines for your treat fix. Most importantly, you can get a delicious hot chicken roll for only €3.25!

## Your Pass to Student Discounts

Your Carlow College student ID card is also your pass to student discounts for a range of goods and services around town. Many high street retailers offer student discounts and the cinemas offer discounts with tickets of just €5 or a meal deal and ticket for €8.



**Rated  
3rd cheapest  
student town for  
entertainment  
in Ireland\***

\* Ireland's Cheapest Student Towns, Switcher.ie 2023





# Transition to College

**Taking the leap into third-level education is an exciting time, but can also be challenging. At Carlow College, you become part of the family and our team of support staff will help guide you through the transition, so you get on with enjoying your life as a student, and of course, your education!**

## Orientation and Induction

During your first days as a student, you'll have a programme of events that is all about setting you up to succeed in your degree. You'll meet your Programme Director, Academic Advisor and all the staff that are available to support you through your third-level journey.

## Campus Tour

Our student ambassadors will take you on a campus tour so you know where all your lecture halls are located, how to use the library and what's available in our Student Resource Building.

## Supports and Services

Our Student Services team will advise you on what supports are available and how to access them – these range from academic and disability supports to chaplaincy, health, careers, advising and counselling.



## Students' Union

All students are members of the Carlow College Students' Union (CCSU). Located in our Student Resource Building, the SU is a great place to hang out between classes and to meet new people. You will also learn about clubs and societies, how to become a class rep and all the exciting social events planned to kick start your college experience.

## Student ID & Access

We will set you up with your student ID card, email address, Moodle access and show you how to use all the online systems associated with studying at Carlow College. You'll also get the all-important WiFi password!



**“In Carlow College, there were no cracks to fall through, and there was always someone there to believe in you”**

**Nicole Burke**  
**B.A. (Hons) in Arts & Humanities**





# Students' Union

All registered students of Carlow College become a member of the Students' Union. It is an organisation run by students for students.

### A Place to Hang

Located in the Student Resource Building, the Students' Union office is open Monday to Friday 9am – 5pm. You can drop into the office if you need advice or assistance, or if you want to raise any concerns. It's also a great space to hang out and relax, play table tennis or air hockey, or challenge your friends on the Playstation.

### Your Student Voice

The Students' Union ensures that the views of students are represented at all levels within the College, and on local and national platforms. We work collaboratively with various College functions to promote student engagement and to ensure you have a positive student experience throughout your studies.

### Get Involved

Want to contribute to a better learning experience for all? You can become a class representative. As a class rep you will be a spokesperson for your classmates within your course and year. You will report student feedback to Programme Board meetings and provide a valuable link between your classmates and the management of your course. This is a fantastic opportunity to build up your skills and your CV, as well as make a positive contribution to your college experience.

### LGBTQIA+ Supports

Within the College, the LGBTQIA+ Society offers a respectful and confidential space for all individuals in the community to chat, and if you are questioning it's a great place to learn too. The Student Counselling Service, Chaplaincy and the Student Health Service are also available for anyone seeking advice or support. In the wider Carlow community there are various online networks, groups and publications - visit [carlowpridefest.ie](http://carlowpridefest.ie) for more.



### Events & Campaigns

Event	Date
Freshers' Week	A week full of on-campus and off-campus events, including a Freshers' BBQ, to help you meet your classmates and settle into college life
Active* Consent	Regular workshops held with our Health Service to promote a safe atmosphere on and off campus
Coffee Mornings	Pop in to have a cuppa and a HobNob to have a chat and destress
Healthy Living	Various activities throughout the year to promote a healthy lifestyle, including cookbook giveaways and guest speakers
Mental Health Awareness	Several events take place throughout the year to support students in learning coping skills and how to seek help
Netflix Sessions	Take a break from study, get cozy and enjoy an afternoon or evening watching a movie classic
Rag Week	A week full of on-campus and off-campus events
Gala Ball	Get glammed up and hit the dancefloor for our annual student gala ball.

### Examples of Clubs & Societies at Carlow College



Soccer



Hurling



Film



Performing Arts



Yoga



LGBTQIA+



Nerd



Debating





# Sports in Carlow

### Get Involved in Sport

Sport and physical activity is an important part of maintaining your physical and mental health. And within Carlow College and the wider Carlow community, there are plenty of options available for people of all skill levels to get involved.

### On-Campus

You can join our own Carlow College teams in Men's Soccer, Women's Futsal and Mixed Hurling. Plus, our campus is also home to the Carlow Cricket Team. Our SU is also supportive of helping to establish new College teams, where students are interested.



### Carlow Sports

Off-campus, Carlow town and county is home to a variety of sporting clubs including GAA, Lawn Tennis, Squash, Badminton, Rowing and Athletic Clubs, to name a few. All of which are open to new members of all abilities.

### Keeping Fit

Close to the College, there are a number of gyms and leisure centres offering discounts to students. The Talbot Hotel Fitness Centre provides extensive gym facilities and a swimming pool and is only a 15-minute walk from campus.





# Student Supports

**Our Student Supports Team are here to help you with each and every stage of your college journey. And by support, we don't just mean academic support! So, whether you are struggling with your academic studies or something more personal, our team are available with a friendly (and confidential) ear to listen, support and advise.**

## Learner Information and Retention Officer

Our LIRO is your first point of contact to assist you to transition into first year and help with your progression through each stage of your degree. It is not unusual to feel overwhelmed at times by all the adjustments you have to make when you first go to college, return to education or even during your course. What our LIRO can do is meet students whose personal circumstances may be impacting on their ability to engage fully with academic life and then work with them to resolve any concerns and get you back on track. LIRO will also provide support and assistance in making helpful referrals to other support services. No question is too big or small - just ask!

## Health

We provide a free, on-campus nursing service to all students, which is supported by an off-campus, subsidised GP service. In addition to responding to immediate medical care needs, our nursing service provides professional advice and guidance on a range of issues: nutrition and dietary support, flu vaccination, contraception, sexual health and so on.



## PAWS Officer

Undeniably the most popular staff member on campus, our PAWS Officer. Alfie is a registered Irish Therapy Dog and visits the Student Resource Building twice a week to help ease the stress and worries of students. All you have to do is look into his big, brown eyes and all your worries just float away!

## Counselling

Our free Counselling Service gives students access to professional and confidential supports to ensure their college experience is a happy and rewarding one. The service allows students the opportunity to discuss any issues or challenges which may be impacting on their own happiness and wellbeing. There are always various online and in-person workshops throughout the year on topics such as embracing challenge, general wellbeing, mindfulness and relaxation.

## Disabilities, Learning Differences and Long-term Health Conditions

Our Academic Resource Office provides a tailored plan to address the specific needs of the student. It co-ordinates academic and personal support with other relevant staff to ensure everything is in place to assist students to participate fully in their programme. Access to exam accommodations, assistive technology training and learning support sessions on a one-to-one or group basis are just some of the ways we can help.

## Pastoral Care

Our Chaplaincy Service recognises and responds to the pastoral and spiritual needs of our students and staff and provides a compassionate presence and a listening ear for the entire College community. The service caters for all faiths and no faith. Students are welcome to drop in for a chat and to take some time out in our multi-faith sacred space. There is also a Quiet Space for students to take some time away from the bustle of student life in a sensory-friendly environment.



"Alfie is a great asset to Carlow College and provides great support to students if they are stressed out or simply just want company."

**Gary Dowling - Laois  
Fourth Year student**





# Academic Supports

**As a small college, we really make supporting the academic development of our students a top priority. The Academic Resource Office provides a number of supports to assist students in the attainment of their academic goals.**

## Academic & Digital Skills

Worried about meeting college academic standards? During your first year, you'll take our Academic & Digital Skills module which is designed to help you develop the necessary academic and information literacy skills for completing your college assessments.

## Writing Development

Need help refining your academic writing skills? Our Writing Development Tutor offers both online or in-person appointments for personalised writing tips and hints to improve your essay marks. There are also regular group workshops offered at key stages of the year.



## Assistive Technology

Technology is changing the way in which we live and learn and is playing an increasing role in facilitating learning for students with disabilities, learning differences and/or long-term health conditions. Our students have access to a range of assistive technologies to assist their reading, writing and note-taking, such as Immersive Reader, Dictate, Bookshare, Livescribe Pen, Glean and Inspiration.

## Technology Support

A large part of your learning experience will involve engaging with technology in some shape or form. So, we offer a range of supports to assist students to engage in their studies. All students have access to free Office 365 to download to your own devices plus free unlimited One Drive data storage. This allows you to study and access your study materials anywhere, at any time. There is also free access to computers in the Study Space, upstairs in the Library. Carlow College also offers free campus-wide WiFi access.

"Student support services are so easy to access and the support I received was fantastic. For example, in first year I was struggling with an essay so I contacted the Writing Development Tutor who showed me how to engage with the essay question, and other ways I could improve my answer. This is a service I know I can go back to at any stage throughout my degree if I'm struggling with a particular essay."

**Karen Wills**  
**B.A. (Hons) in English & History**





# Work Experience

Putting your knowledge into hands-on practice is an important part of the learning experience. Furthermore, applying the soft skills that you develop during your studies in a real-world environment, gives you a more rounded education and ensures that you are career ready come graduation.

Most of our undergraduate programmes have direct work placements, career practice or other internships embedded as part of the programme.

## Real-World Experience

Whether you are interested in teaching or social care, there are opportunities for you to gain hands-on supervised, practical work experience. **Teaching placement** is integrated into the Theology pathway within the Arts & Humanities degree, whilst in social care students complete over **800 hours of supervised practice placement** over years 2 and 3. An added benefit being that this looks great on your CV and will give you a head start when it comes to applying for jobs.

## Meeting Potential Employers

Networking is an important part of your career development, so completing a work placement or internship can help you to start building your networks. Many students who pursue careers in social care or teaching end up employed by the organisations where they completed their work placements.

## Career Insights

You will gain valuable insights into the reality of the career or industry you are interested in pursuing. This can help to refine your career choices or might even highlight potential new career paths of which you are unaware.



"The practical side of the Social Care course, which consists of two semester-long placements gave me the opportunity to explore fields I was interested in working in the future. I am currently still working as a social care worker with the organisation I completed my second placement with."

**Bláthnaid Lahart**  
**B.A (Hons) in Applied Social Studies**  
**(Professional Social Care)**





# Study Abroad

**Studying abroad can be an unforgettable experience that broadens your horizons and helps you experience a different way of life and study. We encourage students to take advantage of studying for a semester with one of our US university partners.**

Study Abroad opportunities are available to second year students on some of our undergraduate programmes.

## Funding and Scholarships

Our study abroad opportunities work on an exchange basis, meaning that you will not need to pay US tuition fees.

All programme fees are published in February of each academic year for the following year. There are currently two study abroad scholarships that accepted students may apply for: The Jon Stauff Scholarship Fund and The Bishop James Davis Travel Prize.

## Benefits of Studying Abroad

- Looks great on your CV
- Broadens your network
- Travel to new destinations and immerse yourself in a new culture.

## Support

Our International Officer is on hand to help you with advice and support. Information sessions are held each year with information on universities, application processes and deadlines. They'll also be on hand to help you throughout the duration of your time away.

## Get in Touch!

Contact our International Officer, Dr Eric Derr for more information  
[intloffice@carlowcollege.ie](mailto:intloffice@carlowcollege.ie)

## Our US University Partners





# Careers & Graduate Skills

Our dedicated Careers Office is here to support every student to pursue their career goals. From your first year through to graduation and beyond, our Careers Officer is here to support you.

## Careers Office

Our Careers Office can help you with advice on career options and postgraduate studies, whilst also assisting with completing application forms. It offers a wide range of services including:

- Graduate employability and careers management skills
- Graduate CV clinic and regular drop-in sessions
- Graduate vacancy list
- Work experience, internship and vacation opportunities
- Postgraduate and job applications
- Personal statements and career decision-making
- Interview skills and practice
- Psychometric test practice



## Graduate Skills

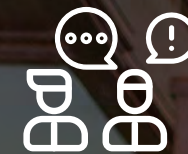
Your studies with Carlow College will help you to develop yourself as a communicator, thinker and problem solver. All of which are valuable skills in any future career. We ensure that all students start their careers with the expertise, social outlook, and principles that will allow them to advance effectively in their chosen careers, to grow as socially responsible people, while retaining a passion for lifelong learning. Our mission is to nurture graduates who will become future influencers and leaders in society in the fields of arts, humanities, and the applied social sciences.

**95% of our graduates secure employment or continue with future study straight after college.**

\*Graduate Destination Survey, 2023



**Problem Solvers**



**Effective Communicators**



**Collaborative Workers**



**Socially Engaged**



**Lifelong Learners**



**Academically Excellent**



**Work and Employment ready**



# Pathways To Teaching

Teaching is a popular pathway for many of Carlow graduates of our Arts & Humanities and English & History programmes. Both programmes fulfil the Teaching Council requirements for registration.

## Post-Primary Teaching

To qualify as a post-primary teacher, you need to complete a Professional Masters in Education (PME) - Post Primary after graduating from your Level 8 degree. There are a number of higher education institutions in Ireland which offer two-year PME programmes. Admission is based on a number of factors, including undergraduate academic results and related work experience.

## Primary Teaching

To qualify as a primary teacher, you need to complete a PME in Primary Education. There are five higher education institutions in Ireland which offer two-year PME programmes and places are extremely competitive. Entry requirements include an Oral Irish Examination, minimum grades in Leaving certificate Irish, English and Maths (or alternatives) and a minimum H2.2 Honours Bachelor Degree.

## Teaching Placements

Our Arts & Humanities degree offers a unique work placement opportunity for students who choose the Theology pathway. These placements offer students the opportunity to gain teaching experience in either primary or secondary level with our partner schools in the Carlow area.

## Applications & Supports

Our Careers Office runs information sessions and workshops on teaching pathways and supports all students in collating postgraduate study applications and preparation for interviews.



"My placement during my studies gave me a great perspective on working with young people. It provided an insightful introduction to teaching before applying to the PME, due to the practical guidance and advice offered by the coordinator, and the autonomy each student is given in relation to lesson planning and classroom activities."

**Dylan Wynne**

**B.A. (Hons) Arts & Humanities | Currently studying  
Professional Masters in Education at Maynooth University**





# Undergraduate Courses

Taking the leap into third-level education is an exciting time whether you are joining straight from school or returning to education as a mature student. At Carlow College you will become part of a small community that strives to support you in shaping your future with 8 outstanding undergraduate degree programmes across Liberal Arts, Psychology and Professional Social Care.





# B.A. (Hons) in Arts & Humanities

## Three reasons to study this course:

- Opportunity to explore a wide range of subjects before focusing on two subject majors.
- Course is designed with an interdisciplinary approach to learning across the different subject areas.
- Pathways into teaching and psychology careers with further postgraduate study.

**Award:** Honours Degree (Level 8)

**CAO Code:** PC410

**2023 CAO Points:** 252-488

**Duration:** 3 Years

**Number of Places:** 120

**Work placement:** Yes

**Study Abroad in US:** Yes

➔ [www.carlowcollege.ie/pc410](http://www.carlowcollege.ie/pc410)

## Course Outline

The B.A. (Hons) in Arts and Humanities is a 3-year multidisciplinary degree, commonly known as a Joint Honours degree. On this programme, students explore a range of subject areas: History; Psychology; English Literature, Creative Arts and Media Studies; Philosophy; Theology and Politics & Society, before developing expertise in two subject majors. This degree equips students with the essential tools needed for the 21st century by nourishing critical thinking, developing communication skills and preparing for future choices. Students who take this programme can open their mind to different ways of thinking and understanding; they become reflective thinkers who are socially engaged and appreciate learning as a lifelong activity.

## Programme Overview

### Year One:

Students must study all six subject pathways - History; Psychology; English, Creative Arts and Media Studies; Philosophy; Theology; and; Politics & Society - to explore each of the disciplines that are offered in this programme.

### Year Two:

Students choose two subject majors to focus their studies in a specific area of interest.

### Year Three:

In the final year, students will continue to study their two subject majors and have the option undertake a Research Thesis in one of their chosen majors.

**Note:** This programme is currently under review and revalidation for 2024, therefore programme structure and content is subject to change. To find the latest programme updates, [visit our website](#).

## Work Placement

Students majoring in Theology have a unique work placement module - Catechetics and Placement. This module offers the opportunity to gain teaching experience in either Primary or Secondary level with our partner schools in the Carlow area.

## Career Opportunities

Graduates are highly employable and work in a wide variety of industries: Public Relations, Administration, Civil Service, Politics, Banking, Information Technology, Librarianship, Archives, Travel and Tourism, Heritage, Arts and Culture, Pastoral Care, Counselling, Marketing and Digital Communications, Journalism, Media and Advertising.

## Further Study Opportunities

Graduates of the B.A. (Hons) in Arts and Humanities have proceeded successfully to a wide variety of Level 9 postgraduate courses in areas such as English, Creative Writing, History, Philosophy, Psychology, Theology, Media, Journalism, Marketing, Administration, Advertising, Librarianship and Archives. Some graduates have also progressed onto PhD programmes. Graduates have also continued onto Professional Masters in Education to qualify as Primary and Secondary school teachers.

## Graduate Story

"Studying Humanities at Carlow College set me up for a career in the publication industry by advancing my communication and literary skills. Having studied mostly philosophy subjects, they encouraged me to think critically, improved my clarity of expression, and strengthened my research skills which are imperative in my job as an editor."

**Sophie Dunne**

Writer, Editor and Podcast Host



## Quick Fact

Leaving Certificate Mathematics is not an entry requirement for this course.

"The thing I like most about the course is the broadness of the programme. From first year you get a taste of all the core disciplines; History, English, Philosophy, Psychology and Theology. For a person like me who was not fully convinced as to what they wanted to do after the Leaving Cert, this course provides concrete skills and education that you can bring with you for life and also use it as a stepping stone to further enhance your education, such as a masters degree."

**Phillip Keegan - Offaly**  
Third Year student





# B.A. (Hons) in English & History

## Three reasons to study this course:

- Immerse yourself in two subjects from foundation to specialisation.
- Interdisciplinary modules each year exploring topical themes such as EDI and Climate Change.
- Employability modules enhance skills and experience in professional areas.

**Award:** Honours Degree (Level 8)

**CAO Code:** PC411

**2023 CAO Points:** 242-544

**Duration:** 3 Years

**Number of Places:** 45

**Work placement:** Yes

**Study Abroad in US:** Yes

➔ [www.carlowcollege.ie/pc411](http://www.carlowcollege.ie/pc411)

## Course Outline

The B.A. (Hons) in English and History is an exciting 3-year, Level 8 degree, where students explore the outstanding literature of the English language and its cultures and immerse themselves in the history of Ireland, Europe and the wider world. The degree provides students with crucial tools needed for the twenty-first century by developing their critical thinking by cultivating strong digital, oral and written communication skills, and by fostering the value of creativity.

## Programme Overview

### Year One:

Study a range of mandatory foundation modules in both English Literature and History, including an interdisciplinary module examining Equality, Diversity and Inclusion

### Year Two:

Students begin to curate their own degree studying a range of mandatory and elective modules.

### Year Three:

Students select from a broad range of elective modules across both majors and will undertake a Research Thesis in English, History or a combined interdisciplinary dissertation.

## Work Placement

Students have the unique opportunity to engage in work placement in Year 3 through the Career Practice module. This module aims to enhance students' employability and skills through real-life work experience in a variety of career paths.

**Note:** This programme is currently under review and revalidation for 2024, therefore programme structure and content is subject to change. To find the latest programme updates, [visit our website](#).

## Career Prospects

Past graduates have progressed to a wide range of careers, including: Teaching (Primary and Secondary), Media and Media Production, Journalism, Marketing, Digital Communications, Advertising, Public Relations, Librarianship, Archives, Information Technology, Management, Finance, and the Civil Service.

## Further Study

If postgraduate study is your aim, this degree gives you the academic grounding you need for successful postgraduate study. Our graduates have successfully gone on to a wide variety of Level 9 postgraduate courses in areas such as English and Literature, Creative Writing, Irish History, Journalism, and Marketing. Some also successfully continuing their academic studies through to Ph.D. level. Graduates have also continued onto Professional Masters in Education to qualify as post-primary teachers.

## Graduate Story

"Like so many students who pass through its doors, my time at Carlow College was extremely rewarding. I learned to hone a range of interpersonal and academic research skills, and gained so much confidence, both inside and outside the classroom."

**Karmel Knipprath**

**PhD candidate at Manchester Centre for Gothic Studies at MMU**



## Quick Fact

Leaving Certificate Mathematics is not an entry requirement for this course.

"I like all my modules across English & History, but my favourites are the literature and fiction modules in English. We are given novels to read, such as Pride and Prejudice and Animal Farm, and are able to express our own thoughts and ideas on these texts which I find really interesting."

**Emma Mahon – Carlow  
Second Year student**



# B.A. (Hons) in Psychology

## Three reasons to study this course:

- Three-year programme allowing for an expedient pathway to employment or further study.
- Dissertation and seminar module in Year 3 provides students with the opportunity to carry out supervised research with the guidance of one-to-one supervision.
- Programme content designed to meet the guidelines of the Psychological Society of Ireland.

**Award:** Honours Degree (Level 8)

**CAO Code:** PC414

**2023 CAO Points:** 298-440

**Course Fees:** €4,750 + €150 PEL per year

**Duration:** 3 Years

**Number of Places:** 40

➔ [www.carlowcollege.ie/pc414](http://www.carlowcollege.ie/pc414)

## Course Outline

This exciting three-year B.A. (Hons) in Psychology degree provides learners with a comprehensive range of the theory and application of this discipline. It is designed to meet the guidelines of the Psychological Society of Ireland (PSI) ensuring that six core aspects of psychology (Biological Basis of Psychology, Child Developmental Psychology, Social Psychology, Cognitive Psychology, Individual Differences and Research Methods) are delivered across the programme.

## Programme Structure

The programme is designed so that each year of the programme builds incrementally upon the last.

### Year One

During Year 1, students cover a range of foundation and introductory modules. For example, students will be provided with opportunities to study The Psychology of Gender and Sexuality, Introduction to Psychology and Crime, and Introduction to Statistical Analysis in Psychology.

### Year Two

During Year 2, students will consider more advanced and applied subjects such as Applied Criminal Psychology, Advanced Social Psychology, Advanced Research Methods and Statistics in Psychology as well as Counselling and Cyber Psychology.

### Year Three

In Year 3, students undertake an independent research project whilst also studying modules such as Personality Psychology, Psychology and Self-Control, Clinical Psychology and Neuropsychology.

## Who is this programme for?

This programme is for individuals interested in making a positive difference in the lives of others. Studying psychology allows the learner to explore what it is to be human, and to examine how and why we think, feel, and behave in the ways that we do. The academic pursuit of psychology will interest the individual who studies simply to learn more about a particular topic, or for those planning to pursue postgraduate study.

## Career Prospects

Graduates can pursue professional psychology careers following postgraduate study, including Clinical Psychology, Educational Psychologist, Forensic Psychologist, Behavioural Psychologist and Counselling Psychologist.

There are many related careers in which a Psychology degree offers graduates a strong entry point. These include Teaching (including in early years, further and adult education), Special Needs Assistant (SNA), Careers Advisor, Marketing and Market Research, An Garda Síochána, Immigration Officer, Human Resources, Coaching, Mediation and Sports and Exercise Coach.

## Further Study

This degree is the first stage to professional training in the area of psychology. To pursue a professional career in psychology, postgraduate study in a PSI accredited course is required.

**Note:** An application for accreditation has been submitted to The Psychological Society of Ireland (PSI).

"I chose Carlow College as it was a smaller college and had heard that it was friendly for mature students. My favourite module so far is the Psychology of Gender & Sexuality as it really opened up my eyes to a lot of things I wasn't aware of. The lecturers are really friendly and helpful and you get to know them on a personal level, which makes it so much easier to approach them when you have any questions."

**Kelly Coogan - Kilkenny**  
**First Year student**



# B.A. in Applied Social Studies (Professional Social Care)

## Three reasons to study this course:

- Over 800 hours of supervised Practice Placement in Years 2 and 3 with dedicated preparation and support.
- Qualification approved by CORU (professional regulator).
- Numerous graduate employment opportunities on completion of Year 3 (Level 7).

**Award:** Ordinary Degree (Level 7)

**CAO Code:** PC404

**2023 CAO Points:** 190-367

**Duration:** 3 Years

**Number of Places:** 60

**Work placement:** Yes

➔ [www.carlowcollege.ie/pc404](http://www.carlowcollege.ie/pc404)

## Course Outline

The B.A. in Applied Social Studies (Professional Social Care) has, as its primary aim, the preparation of students for professional Social Care Work. Under the remit of CORU, the Health and Social Care Professions regulatory body, Social Care is emerging as a professional field in its own right. This programme builds a strong knowledge base, develops core professional skills and promotes personal and professional development to enable graduates to take up employment positions across a variety of sectors in the professional provision of social care.

## Professional Accreditation

This programme is approved by CORU. The Social Care Register will open in November 2023. CORU define Social Care Work as follows: 'Social Care Workers are professional practitioners engaged in the practice of social care work. Social care work is a relationship-based approach to the purposeful planning and provision of care, protection, psychosocial support and advocacy in partnership with vulnerable individuals and groups who experience marginalisation, disadvantage or special needs. Principles of social justice and human rights are central to the practice of Social Care Workers.' (CORU 2019).

**800+ hours**  
of supervised  
Practice Placement



**Note:** This programme is currently under review and revalidation for 2024, therefore programme structure and content is subject to change. To find the latest programme updates, [visit our website](#).

## Work Placement

Students complete two 13-week placements: 1st semester in Year 2 and 2nd semester in Year 3, with each placement carrying 25 credits. During these practice placements, the theory, principles and policy that relate to Social Care Work learned in the classroom are brought to the professional care setting. Here students have an opportunity to develop their professional skills under the guidance of experienced Social Care professionals. Our Placement Co-ordinator and Practice Tutor here in the College will help you find a suitable placement setting.

## Career Prospects

As a professionally registered Social Care Worker, you may find employment in a wide range of settings in the voluntary, statutory and private sectors in residential or community-based settings. You may work with children and adolescents at risk, people with intellectual or physical disabilities, people who are homeless, people with alcohol/drug dependency, families in community settings or with older people.

## Further Study

Most graduates of the B.A. in Applied Social Studies (Professional Social Care) progress to our B.A. (Hons) in Applied Social Studies (Professional Social Care). This is a 1 year 'add-on' programme which leads to a Level 8 qualification.

"I chose my course as two of my children were born deaf and I've had various dealings with social services throughout the years, so I wanted to do something that would make a difference. I love the modules on this course and how versatile they are and how they make you look at the world a little bit differently."

**Tanya Sheridan - Kildare**  
**First Year student**



# B.A. (Hons) in Applied Social Studies (Professional Social Care)

## Why complete an add-on year?

- Gain the opportunity to carry out supervised field research with the guidance of one-to-one supervision.
- Graduates have a high level of success in securing employment in their preferred area of work, and many have developed their careers to leadership positions.
- Programme further builds on Professional Social Care Workers skills.

**Award:** Honours Degree (Level 8)

**Duration:** 1 Year Add-on

**Number of Places:** 60

➔ [www.carlowcollege.ie/pc404A](http://www.carlowcollege.ie/pc404A)

## Course Outline

This is a 1 year 'add-on' Level 8 degree programme for graduates of the B.A. in Applied Social Studies (Professional Social Care). The programme broadens students' understanding of Social Care Theory and Practice; it deepens their knowledge and skill base for evidence-based practice; and it offers an opportunity to research their own area of interest within the broad Social Care field. There is a particular emphasis on enhancing students' employability skills, professional development and leadership capacity.

## Who can apply?

Applicants must already hold a B.A. Level 7 degree in Applied Social Studies or equivalent. All applications are made directly to our Admissions Office at: [admissionscc@carlowcollege.ie](mailto:admissionscc@carlowcollege.ie)

## Career Prospects

Holding a Level 8 degree in Social Care provides broader career opportunities, as well as the ability to command a higher salary or apply for leadership positions.

## Further Study

Graduates have successfully progressed to a wide variety of Level 9 Postgraduate courses in the areas of Leadership in Therapeutic Child & Social Care, Social Care Management, Social Work, Counselling, Psychotherapy, Play Therapy and Health Promotion. Some have also continued their academic studies through to Ph.D. level.

"I like that this degree had a balance of theory and practice-based approach. The two-block placements really help me to experience what it was like to be a social care worker. This hands-on experience really help me get a better understanding of how to apply all the theories we learnt about to the job."

**Cian Loakman - Kildare**

**B.A. (Hons) in Applied Social Studies (Professional Social Care)**  
**Social Care Worker at Pathways Ireland**





# Part-Time Study

Whether you are looking to undertake full degree study, upskill for career development or for personal interest, you can choose to study part-time with Carlow College.

## Part-time Undergraduate Degree Study

Part-time undergraduate students have the flexibility to study up to six modules per year towards your degree. All undergraduate degrees offer part-time study, with the exception of the B.A. in Applied Social Studies (Professional Social Care), which offers students the ability to complete year 1 part-time (there is no part-time option beyond year 1).

## Career Development or Personal Interest

You can study stand-alone modules within our undergraduate programmes. This may be to enhance your existing qualification to improve career prospects, or to further develop an area of interest to you.

## Mode of Delivery

Modules are taught in conjunction with the main degree, therefore part-time students will attend the same classes as full-time students. Undergraduate lectures are delivered on-campus between the hours of 9.00am - 5.00pm.

## Student Supports

Part-time students can access the full range of free student support services including disability and learning differences supports, writing development and other student support services.

## Fees & Grants

Part-time fees for the 2024/2025 Academic Year are as follows:

### 5 Credit Module: €250

A 15% discount applies to those who are in receipt of Social Welfare payments (proof required). You cannot avail of any SUSI grants or Back to Education Allowances as a part-time student

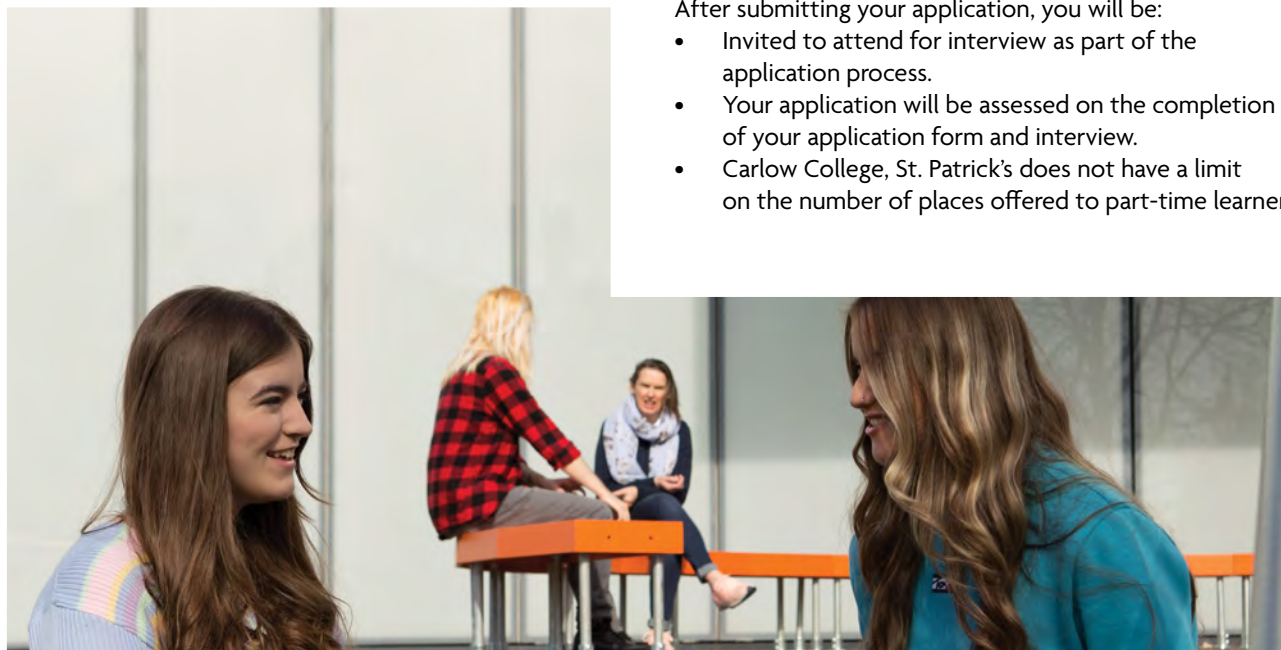
## How to Apply

Applications for part-time study are made directly to Carlow College, St. Patrick's and are not processed by the CAO. Applications can be made at:

[www.carlowcollege.ie/apply](http://www.carlowcollege.ie/apply)

After submitting your application, you will be:

- Invited to attend for interview as part of the application process.
- Your application will be assessed on the completion of your application form and interview.
- Carlow College, St. Patrick's does not have a limit on the number of places offered to part-time learners.



"When the pandemic hit, I was left without work and decided that it would be better to keep active by enrolling in a course. However, being a parent of two young children and realising that work would eventually return in some form made me doubt I had the time to devote to it. That's where Carlow College's part-time options really helped. The lecturers were extremely encouraging, and the admin staff couldn't have been more helpful.

As it happened, when work returned a little earlier than I had anticipated it didn't impact as much as I had thought. It just becomes a part of the new routine, and you make it work. So, if you are unsure or second guessing yourself regarding a return to education, I can highly recommend the option of part time learning at Carlow College."

**Stewart Quinn – Laois**  
**B.A. (Hons) in Arts & Humanities**





# Applications & Admissions

Carlow College welcomes applications from people from all educational and personal backgrounds. This section outlines how to apply depending on your entry route.





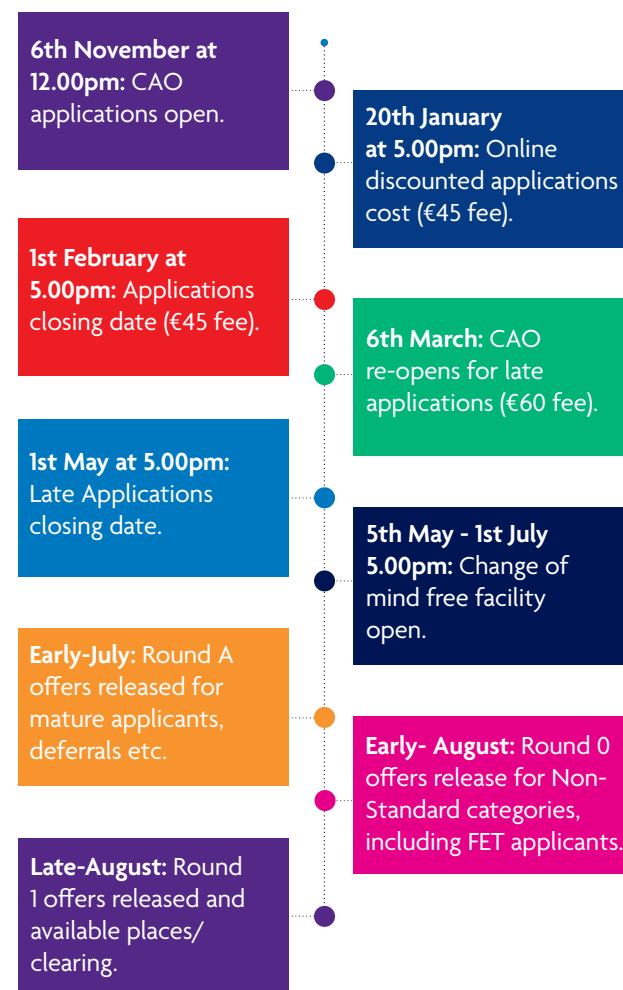
# How to Apply

All applications for entry to the first year of Carlow College's full-time undergraduate courses are made through the Central Applications Office (CAO). Applications open during November for courses starting in September the following year. Detailed information on how to apply is available at [www.cao.ie](http://www.cao.ie)

## Using the CAO System

Within your CAO application, you may choose up to 20 courses – 10 at Level 8 and 10 at Level 6/7. Your choices on one list do not affect your choices on the other, therefore you may receive an offer from each list. It is very important that you list your choices in order of genuine preference in each category.

## Key CAO Dates



## There are five main types of applications:

1. Irish Leaving Certificate
2. FETAC and QQI applicants
3. Mature Applications
4. Non Standard Applications, which includes GCE and GCSE applicants and School leavers from other EU countries
5. International (non-EEA) applications

### 1. Irish Leaving Certificate

#### Minimum Entry Requirements:

- Ordinary Degree (Level 7): Five grade H7/O6 including English, Irish or a foreign language. Mathematics is not required
- Honours Degree (Level 8): Two grade H5 and four grade H7/O6 including English, Irish or a foreign language.
- Mathematics is only required for the B.A. (Hons) in Psychology (PC414) with a minimum grade O6

#### Points

CAO points are allocated for Leaving Certificate grades H1-H8 and O1-O8 as follows:

Higher Level	% Marks	CAO Points
H1	90 – 100	100
H2	80 < 90	88
H3	70 < 80	77
H4	60 < 70	66
H5	50 < 60	56
H6	40 < 50	46
H7	30 < 40	37
H8	0 < 30	0

Ordinary Level	% Marks	CAO Points
O1	90 – 100	56
O2	80 < 90	46
O3	70 < 80	37
O4	60 < 70	28
O5	50 < 60	20
O6	40 < 50	12
O7	30 < 40	0
O8	0 < 30	0

#### Bonus Points for Mathematics:

25 additional points will be awarded for Higher Level Mathematics at grades H6 and above.

#### Leaving Certificate Vocational Programme (LCVP)

LCVP modules can be counted in place of a Leaving Certificate. CAO points are awarded as follows:

Level	CAO Points
Distinction	66
Merit	46
Pass	28

#### Leaving Certificate Applied (LCA)

The LCA does not meet the minimum entry requirements for programmes at Carlow College, St. Patrick's. Holders of the LCA may gain entry through QQI-FET level 5/6 award schemes.

### 2. QQI & FET Applicants

#### Minimum Entry Requirements:

- Ordinary Degree (Level 7): a full QQI FET (Level 5 or 6) award with a minimum FE grade equivalent of 178 CAO points
- Honours Degree (Level 8): a full QQI FET (Level 5 or 6) award with a minimum FE grade equivalent of 243 CAO points
- All FE applicants will be required to have a full level 5 award in a programme 'linked' to the Carlow College degree to which they are seeking entry.

Please visit [www.cao.ie](http://www.cao.ie) for details of the scoring scheme.

#### Linked QQI & FET Programmes

Carlow College, St. Patrick's, annually reviews our Linked Further Education programmes for the purposes of entry to our degree programmes. As this list is continuously updated, we encourage QQI-FET applicants to see the full listing of relevant QQI-FET Awards for entry to our degree programmes at [carlowcollege.ie/cao-application/qqi-fet-students/](http://carlowcollege.ie/cao-application/qqi-fet-students/)

#### Advanced Entry/Recognition of Prior Learning (RPL)

Applicants who already hold a qualification or who have successfully completed part of a programme at a recognised Higher or Further Education Institution may apply for exemptions or entry onto the second or subsequent years of the following undergraduate programmes:

- B.A. (Hons) in Arts & Humanities (PC410)
- B.A. (Hons) in English & History (PC411)
- B.A. (Hons) in Psychology (PC414)
- B.A. in Applied Social Studies (Professional Social Care) (PC404)\*
- B.A. (Hons) in Applied Social Studies (Professional Social Care) (One-year add-on)

\*This programme is approved for the professional education and training of Social Care Workers. Therefore, there are specific criteria and limitations in relation to advanced entry. Please contact the Admissions Office or Programme Director for details.

This applies where an applicant has gained awards in programmes directly or indirectly relevant to the Carlow College programme they wish to apply for.

Further information in relation to Advanced Entry/RPL please contact the Admissions Office at: [admissionscc@carlowcollege.ie](mailto:admissionscc@carlowcollege.ie)

### 3. Mature Applicants

There are no limits on the number of places offered to Mature Applicants with Carlow College. This applies to all courses at Carlow College, St. Patrick's.

#### Minimum Entry Requirements

The sole requirement for application as a mature student is age. Applicants must be aged 23 years or older on or before the 1st of January of the year of entry to a full-time undergraduate degree programme. Mature Applicants must apply through the CAO before the 1st of February for all full-time undergraduate programmes.





Mature applicants for the B.A. (Hons) in Psychology will also be required to do Mathematics computation test, such as WIAT III or similar, which will be arranged by the College.

Application Process

After the relevant CAO closing date, our Admissions Office will send formal correspondence to all Mature Applicants, including:

- a more detailed online application form (specific to programmes applied for)
- an invitation to attend an assessment day
- For PC414: invitation to attend Mathematics computation test

There are two scheduled interview sessions, one after the 1 February deadline (normally early March) and the other after the 1 May deadline (normally end of May)

The assessment day includes: Meet Admissions Staff, Written Assessment, Interview Questions and Answer Session and a Tour of the College

Your application form and participation in the assessment day will be assessed. It is at the discretion of the College whether you are recommended to the CAO to receive an offer.

Receiving Your Offer

If you are successful, Carlow College, St. Patrick's will be recommending to the CAO that a place offer be made to you. You should, therefore, receive an offer from Carlow College through the CAO in early July if we are your first preference.

4. Non-Standard Applicants

Types of Non-Standard applicants include:

- International Students GCW/GCSE
- Other School Leaving Exams NCVA Level 2/3 (pre-2002)
- Further Education (other than FETAC Level 5/6)
- NCVA Level 2/3 Disability/Specific Learning

Applicants who wish to be considered as a Non-Standard Applicant should tick the relevant category box on Page 3 of the CAO application form.

Further details on Non-Standard Applicants may be found on our website at:  
[carlowcollege.ie/cao-application/non-standard-students](http://carlowcollege.ie/cao-application/non-standard-students)

5. International Non-EEA Applicants

Minimum Entry Requirements

- successfully completed a second level/high school qualification equivalent to the Irish Leaving Certificate
- a minimum IELTS score of 6.5

Application Process

Non-EU applications open in February each year and close on the 31st May. Applications can be made via our online application portal at: [www.carlowcollege.ie/apply](http://www.carlowcollege.ie/apply)

A non-refundable application fee of €40 applies for non-EU applications.

For more information, contact our International Office at: [intloffic@carlowcollege.ie](mailto:intloffic@carlowcollege.ie)

Other Requirements

Garda Vetting

A number of courses at Carlow College, St. Patrick's require students to undertake placements with external agencies. In such placements, students will assume positions of trust and be in contact with the public. To ensure the protection of the public, and justify public trust and confidence, the College is committed to ensuring that students undergo Garda Vetting, in line with standard national practice.

Programmes for which Garda Vetting is required are:

- B.A. in Applied Social Studies (Professional Social Care)
- B.A. (Hons) in Applied Social Studies (Professional Social Care)
- B.A. (Hons) in Arts & Humanities (if enrolled in the Catechetics & Teaching Placement Module)
- B.A. (Hons) in English & History (if enrolled in the Career Practice Module)

Carlow College uses the Garda Síochána National Vetting Bureau (GSNVB) which, where applicable, may liaise with the Police Service of Northern Ireland Vetting Service to assess the suitability of applicants for admission to such programmes. Garda Vetting includes Police Vetting in respect of other jurisdictions

English Language Requirements

Applicants whose first language is not English and have not completed the Irish Leaving Certificate must be able to provide evidence that their spoken and written level of English is adequate for the programme for which they have applied.

The relevant certified documentation to support this must be provided as part of the application process:

1. An approved English language qualification or test result (see below for list of approved qualifications).  
The qualification must have been awarded no more than two years prior to the proposed date of enrolment;
- AND/OR
- 2.Satisfactory completion of an interview process for entry onto the programme.

English Proficiency Qualifications	Minimum Achievement Level Required for Level 6 – 9 Entry
Irish Leaving Certificate	Grade O6 or better in Ordinary Level English
High School Diploma (United States)	Grade C or better in English (senior year results)
GCSE	Grade 4 (C) or better in English
TOEFL Paper Based Test	570
TOEFL Computer Based Test	233
TOEFL Internet Based Test	A minimum score of 90
IELTS (Academic version)	6.5
DuoLingo	Minimum of 120 with 110 in each sub-score
ESOL	39-50 <sup>1</sup>
Pearson Test of English (PTE Academic)	63 with a minimum of 59 in all components.
Trinity ISE 3	Minimum of a Merit in each skill category
Oxford Test of English	Minimum score of 130
UCLES - University of Cambridge Local Examinations Syndicate:	English at grade C or above
Cambridge Certificate of Proficiency in English / Advanced English	Grade C (CEFR Level C1 or C2)
Cambridge, First Certificate	Grade A (CEFR Level C1)
English Test for Academic and Professional Purposes (ETAPP)	Grade C1 or better (CEFR Level C1 or C2)

<sup>1</sup>This test is only applicable to EEA Applicants.

**Note:** In exceptional circumstances results in examinations other than those outlined below may be accepted as proof of competence in the English language. However, the results obtained in such other examinations must indicate competency to one of the standards outlined above. Applicants should check with the International Office for more details.

**Note:** Visa-required nationals should note that to comply with current immigration procedures, results of recognised English Language qualifications must accompany visa applications; please see [www.inis.gov.ie/en/inis/pages/study](http://www.inis.gov.ie/en/inis/pages/study)







"I like studying in Carlow College because the lecturers are truly there to help you, you get a personalised experience with each lecturer and it makes learning more enjoyable. I would recommend the College to anyone who is looking for a friendly college, a college you know that is here for you and your needs, Carlow College is the place for you. A hidden gem right in the heart of Carlow."

**Lauren Kinsella - Kildare**  
**B.A. (Hons) in Arts & Humanities**





# Fees, Grants, & Scholarships

## Undergraduate Fees

A student contribution (registration) fee of €3,000 (2023/24) is payable by all students who do not qualify for a grant or scholarship for most of our programmes.

Please note, the B.A. (Hons) in Psychology (PC414) is not funded by the Department of Education and therefore, is subject to annual course fees of €4,750 (which includes the student contribution fee) plus €150 PEL (Protection of Enrolled Learner insurance) with no grant funding available. Full details of fees and eligibility are available on our website at [carlowcollege.ie/fees-grants/](http://carlowcollege.ie/fees-grants/)

## Grants

### Student Universal Support Ireland (SUSI)

SUSI is the single grant-awarding authority handling all applications for student grants. Applicants must make their grant application online at [www.susi.ie](http://www.susi.ie). Student grants are divided into maintenance grants, fee grants and the postgraduate contribution.

### Back to Education Allowance (BTEA)

BTEA is a scheme for unemployed people, lone parents and people with disabilities who are in receipt of payments from the Department of Social Protection and wish to take up a third level course. Participants receive a standard rate of payment which is not means tested. The BTEA is not payable if the student is in receipt of either the Higher Education Grant (SUSI / Local Authority) or VEC scheme. All enquiries for eligibility should be made to local Department of Social Protection Offices.

## Undergraduate Scholarships

Entrance and Progression Scholarships are offered to students across all programmes to recognise academic achievement. These scholarships are awarded automatically, so there is no application required. A monetary prize of €500 is awarded at an awards ceremony each year.

Scholarships available are:

### Academic Achievement Entrance Scholarship

Awarded to the student with the highest points on each undergraduate programme.

### Mature Student Entrance Scholarship

Awarded to the mature student with highest grade point average (GPA) in semester one on each undergraduate programme.

### Progression Scholarship

Each year from first to third year, the student who gains the highest GPA, subject to a minimum of 70%, in each undergraduate programme will be awarded a Progression Scholarship.





# Contacts

### Disclaimer

We have taken great care in compiling the information contained in this prospectus, which is accurate at the time of going to print. However, the provision of courses, facilities, accreditation and other arrangements described in the prospectus are regularly reviewed and may be subject to change without notice. We recommend that you check our website at [www.carlowcollege.ie](http://www.carlowcollege.ie) for the most up-to-date information before making an application.

### Equal Opportunities

Carlow College, St. Patrick's operates an equal opportunities admissions policy. It aims to ensure that all applicants receive equal opportunities regardless of gender, age, ethnicity, nationality, sexual orientation or political or religious belief.

### Acknowledgements

Prospectus produced by Carlow College Digital Communications and Marketing Office and designed by Designedly. Photography by Gingham Sky Photography, Carlow Arts Festival, Allen Kiely Photography and Carlow Tourism.



### Directory

#### Student Recruitment

**T:** +353 (0)59 915 3296  
**E:** [slo@carlowcollege.ie](mailto:slo@carlowcollege.ie)

#### College Reception

**T:** +353 (0)59 915 3200  
**E:** [info@carlowcollege.ie](mailto:info@carlowcollege.ie)

#### Admissions Office

**T:** +353 (0)59 915 3243  
**E:** [admissionscc@carlowcollege.ie](mailto:admissionscc@carlowcollege.ie)

#### Learner Information & Retention Office

**T:** +353 (0)59 915 3233  
**E:** [liro@carlowcollege.ie](mailto:liro@carlowcollege.ie)

#### Academic & Disability Supports

**T:** +353 (0)59 915 3289  
**E:** [academicresource@carlowcollege.ie](mailto:academicresource@carlowcollege.ie)

#### Counselling

**T:** +353 (0)59 915 3225  
**E:** [counsellor@carlowcollege.ie](mailto:counsellor@carlowcollege.ie)

#### International Office

**T:** +353 (0)59 915 3231  
**E:** [intl@carlowcollege.ie](mailto:intl@carlowcollege.ie)

#### Health Service

**T:** +353 (0)59 915 3237  
**E:** [nurse@carlowcollege.ie](mailto:nurse@carlowcollege.ie)

#### Students' Union

**T:** +353 (0)59 915 3250  
**E:** [supres@carlowcollege.ie](mailto:supres@carlowcollege.ie)





## Come Visit Us

 **Undergraduate Open Day**  
Thursday, 26th October 2023, 11am – 3pm

 **CAO Choices Open Evening**  
Wednesday, 24th January 2024, 6pm – 8pm

 **Spring Open Day**  
Thursday, 7th March 2024, 10am – 1pm

## Campus Tours

If you can't make one of our open days or scheduled events, you can book a campus tour. Tours give you an opportunity to learn more about the College, our facilities, student supports available and your preferred course/s. Tours are available all year round.

Details of all Open Days and Q&A events are available on our website  
➡ [carlowcollege.ie/cao](https://carlowcollege.ie/cao)

Contact us at [slo@carlowcollege.ie](mailto:slo@carlowcollege.ie) to book your campus tour.

We look forward to welcoming you to Carlow College.



### Connect with us

Get the most up-to-date CAO information at [www.carlowcollege.ie/cao](https://www.carlowcollege.ie/cao)



Follow @carlowcollegestpatricks on social media



COLÁISTE CHEATHARLACH  
NAOMH PÁDRAIG  
CARLOW COLLEGE  
ST. PATRICK'S

Carlow College  
College Street  
Carlow  
R93 A003  
T: 059 9153200  
E: [slo@carlowcollege.ie](mailto:slo@carlowcollege.ie)