



**CARLOW  
COLLEGE  
ST. PATRICK'S**



**PROSPECTUS  
2021**

[www.CarlowCollege.ie](http://www.CarlowCollege.ie)





## Contact Information

Carlow College, St. Patrick's  
College Street  
Carlow  
Ireland

T: (059) 915 3200  
E: [info@carlowcollege.ie](mailto:info@carlowcollege.ie)  
W: [www.CarlowCollege.ie](http://www.CarlowCollege.ie)

## Admissions Office

E: [admissions@carlowcollege.ie](mailto:admissions@carlowcollege.ie)

## School Liaison Office

E: [slo@carlowcollege.ie](mailto:slo@carlowcollege.ie)



**CARLOW  
COLLEGE**  
ST. PATRICK'S

## TABLE OF CONTENTS

Getting Here	2
Welcome	5
Why Study in Carlow	6
Why Choose Carlow College	8
Culture on Campus	10
Open Day	13
Student Recruitment	15
Study with Inspirational Lecturers	16
<b>Programmes</b>	
B.A. in Arts & Humanities	21
B.A. (Honours) in Arts & Humanities	27
B.A. (Honours) in English & History	33
B.A. in Applied Social Studies (Professional Social Care)	39
B.A. (Honours) in Applied Social Studies (Professional Social Care)	45
B.A. (Honours) in Social, Political & Community Studies	51
M.A. (Leadership in Therapeutic Child & Social Care)	57
M.A. in Irish Regional History	63
Postgraduate Diploma In Irish Regional History	67
Graduates Skills & Employability	70
Admissions	73
Grants, Fees & Scholarships	83
Graduation Awards & Prizes	88
Part-Time Study	90
Student Services & Learner Supports	93
P.J Brophy & Keeffe Library	100
Study Abroad in the U.S.	102



# GETTING HERE

Carlow College, St. Patrick's campus is located in the heart of Carlow town. Carlow is one of Ireland's largest inland towns. It is located in the sunny south-east on the banks of the River Barrow. Here students can experience exhilarating outdoor adventure, vibrant nightlife and a rich cultural heritage. Carlow is well serviced by road and rail links to major Irish cities and towns, and is approximately 80km from Dublin Airport.

## Car

Carlow is on the main Dublin to Waterford M9 route, approximately 1 hour's drive from Dublin and an hour from Waterford. Our pedestrian entrance is located on College Street and our car-parking entrance is located on Old Dublin Road. The College has ample free car-parking on campus.

## Bus & Coach

Carlow Bus Station is 10 minutes (on foot) from the College. Bus & Coach services to and from Dublin, Waterford, Kilkenny, Wexford and surrounding counties operate daily from Carlow.

## Train

Carlow railway station is 5 minutes (on foot) from the College. With a journey time of approx. 1 hour from Heuston station, Carlow sits at the halfway point on the Dublin to Waterford line.





## World Class

VISUAL Arts Centre &  
Theatre on Campus



**100%** of Graduates  
would recommend Carlow  
College, St. Patrick's  
(Graduate Destination  
Survey, 2019)



**2nd** oldest Third Level  
Institution in Ireland



**31%** cheaper rent in Carlow  
than the national average  
(Enterprise Ireland, 2018)



# CARLOW COLLEGE ST. PATRICK'S



**83%** of Graduates  
are in Employment or  
Further Study  
(Graduate Destination  
Survey, 2019)



**No limit**  
on intake of  
Mature Students



**71%** of Academic  
Staff are PhD qualified



Exciting Work  
Placements & Internships in  
**ALL** undergraduate  
degrees



**1:15** Lecturer to  
Student Ratio



*Carlow College, St. Patrick's offers a high standard of supportive education in a beautiful historic setting.*



## Welcome / Fáilte

As Assistant Registrar, I am delighted that you are considering studying with us in Carlow College, St. Patrick's. Choosing a programme of study and a college in which to base yourself is a challenging but also an exhilarating undertaking. You are about to cross a threshold and we hope very much that the steps you take lead you to one of our undergraduate or postgraduate programmes.

As you will see in this prospectus, we offer a range of exciting and relevant programmes that cater for a variety of interests. Our lecturers are highly qualified, committed and enthusiastic individuals. Many of them are experts in their fields of study and this means that you will be learning about the latest research and thinking in your chosen area. Our programmes are highly-respected and all our staff work together to provide the very best learning experience for our students. We are hugely proud of our graduates who have gone on to fulfilling employment and further study.

Going to college is about more than studying and becoming work ready, it is about joining a community, stretching your wings and taking advantage of everything that is on offer. This might be joining a society with like-minded people, playing a sport or availing of our study-abroad options. We believe that college should open your mind, provide opportunities for new experiences and help you acquire skills and friendships that will last a lifetime.

A third-level education is a wonderful opportunity for self-development, whether you are just out of secondary school or returning to education as a mature student. I hope you will consider joining us to study here and I look forward to welcoming you to Carlow College. I can promise you a fulfilling journey of learning in a College with a great sense of history as well as a clear focus on your future.

*Dr. Margaret Murphy*

Assistant Register, Academic Affairs



**CARLOW  
COLLEGE**  
ST. PATRICK'S

# WHY STUDY IN CARLOW?





### *Student Town/ Nightlife/Activities*

Carlow is a bustling, fun and lively student town with a population of over 23,000 and a student population of over 7000. Carlow College, St. Patrick's is located at the heart of the town, with a host of activities for students to engage in, such as the exciting nightlife, shops, restaurants, cultural festivals and health & leisure outlets. If the great outdoors is more your thing, get involved with all Carlow has to offer. Students can visit the Brownshill Dolmen, Ducketts Grove & Oak Park or take part in water sports on the river Barrow which are all within close distance of our College. You'll never be stuck for options in Carlow.



### *Public Access/ Public Transport*

There are excellent transport services in Carlow with the train & bus station just a short walk from Carlow College, St. Patrick's, operating multiple services daily. This makes the commute to Carlow easy and hassle free and gives students plenty of flexibility getting to and from the College. The central location of the College also means that students are based in Carlow town centre. We couldn't be better placed!



### *Culture*

Carlow College, St. Patrick's is at the heart of the Cultural Quarter in Carlow Town where there is rich cultural heritage. Our students can engage in a variety of culturally activities on campus. We have the VISUAL Arts Centre & Theatre right next door and The Carlow Arts Festival, Culture Night & the Carlow Art Collection all held on the College grounds. Off campus, you'll find Music, Arts, Museums and a host of entertainment activities to keep you busy.



### *Rent/ Accommodation*

Make Carlow your home away from home. There is plenty of student accommodation available in Carlow Town, most of it within minutes of Carlow College, St. Patrick's. The cost of renting accommodation in Carlow is significantly cheaper than other towns and cities. What does this mean for students? An easy walk or cycle to College and more cash in your pocket!

## Why Choose



**CARLOW  
COLLEGE**  
ST. PATRICK'S

### *Student-Centred*

At Carlow College, St. Patrick's, our students are at the centre of everything we do. Our class sizes are small and inclusive, meaning students receive more personal attention and lecturing staff will know you by name. At Carlow College, St. Patrick's, you are more than just a number.



### *Practical Learning*

Students have opportunities across all undergraduate degree programmes to gain practical experience during their time as a student in Carlow College, St. Patrick's, through Career Practice & Placement. In the competitive workplace environment, practical experience will give you the platform to hit the ground running when you start your career.

### *Centre of Things*

Carlow College, St. Patrick's is situated in the heart of Carlow Town. As a student, you will be on the doorstep of a vibrant, friendly and bustling student friendly town, with shops, restaurants and an exciting nightlife. Plus, Carlow College, St. Patrick's is at the heart of the Cultural Quarter in Carlow Town.

### *Expert Lecturers*

Our lecturers are experts in their chosen disciplines and are recognised for the quality of their teaching & research. They continually offer students guidance and support throughout their time at the College.



## Job Prospects

Our graduates are highly sought after by employers who recognise that they have the right mix of expertise and experience to make a valuable contribution to the workplace. 83% of Carlow College, St. Patrick's 2018 graduates are currently successfully employed or exploring further studies in high profile organisations and institutions across the globe including: Google, Apple, Emirates, RTE, TV3, TUSLA, United Nations, Peter McVerry Trust, University of Kent, and Trinity College, Dublin.

## Academic Supports

At Carlow College, St. Patrick's, we strive to ensure our students achieve their academic best. Our Academic Resource Office works to guide and support students to reach their academic goals through services such as Learning Development Classes & Workshops, Essay Doctors, Academic Help Desk, IT & Digital Skills Workshops, Assistive Technology and personal supports for learners with disabilities, learning differences or who have additional requirements.

## Diverse Community

In Carlow College, St. Patrick's, we value and celebrate all students, whatever their background or life experience. It is our experience that a diverse group of students enriches and enhances the educational environment for everyone. The College is committed to providing an inclusive culture valuing this diversity and creating a learning and social environment where the rights and dignity of all students are respected. Our commitment to equality, diversity and inclusion actively seeks to support students in reaching their full potential.



# CULTURE ON CAMPUS

Carlow College, St. Patrick's is located at the heart of Carlow's Cultural Quarter with the VISUAL Arts Centre and the Carlow Art Collection located on campus, the Carlow Arts Festival held on our grounds each year and the County Library, Museum, Tourist Office, Cathedral & Courthouse all located nearby.



## VISUAL Centre for Contemporary Arts

On the grounds of Carlow College, St. Patrick's is the magnificent Arts Centre, VISUAL, home of the largest single-gallery space in Ireland and a 320-seat Theatre. It produces programmes of both national and international contemporary art, new work by leading artists, up to the minute digital media, artist talks, tours, workshops and intimate music gigs in the bar, with theatre, film, dance and comedy all happening in the theatre also. The College produces a number of events in partnership with the VISUAL each year and also offers discounted performance tickets for students throughout the year.





## Carlow Arts Festival

Carlow College, St. Patrick's is the festival HQ for the Carlow Arts Festival held in June each year and is Ireland's first big cultural event of the Summer. The festival celebrated its 40th Anniversary in 2019. As part of those celebrations, Carlow College, St. Patrick's was home to approximately 30 acts & events over the festival weekend. These included Max Richter's world-renowned SLEEP, Mosh Split Acrobatic Show, DJ Kormac, an Open Air Cinema and the spectacular celebration of Carlow, Sugartown, made in collaboration with the people and communities of Carlow.



## Carlow Art Collection

The Carlow Art Collection is proudly housed in Carlow College, St. Patrick's and is a highly prized collection which attracts visitors both nationally and internationally each year. The collection boasts the work of numerous internationally acclaimed artists and at its core is a collection of invaluable drawings by Carlow's most famous artist Frank O'Meara (1853-1888).



## Culture Night

Culture Night is a unique celebration which happens across the island of Ireland each year, celebrating Arts, Heritage and the Culture of Ireland. Carlow College, St. Patrick's is a key location in the Carlow celebrations with events taking place on campus each year. In 2019, events such as 'The Writing Hive' workshops, and performances from Music Generation were held in Carlow College, St. Patrick's as part of the celebrations.



## OPEN DAY

Experience what life at Carlow College, St. Patrick's is really like first hand. Chat to our students and staff, explore the campus, check out the facilities and learn more about the degree programmes you are interested in.



*Open Day*  
Friday, 13th November 2020  
Saturday, 14th November 2020



# STUDENT RECRUITMENT



## Exhibitions

Carlow College, St. Patrick's participates in many career exhibitions within the region and nationally throughout the academic year.



## College Visits

College visits provide an opportunity for students to experience College life, sit in on first year lectures, tour the Campus, and meet lecturers and current students. These can be arranged throughout the year with our School Liaison Office.



## School Visits

Carlow College, St. Patrick's organises a comprehensive programme of school visits and information events throughout the year. Our representatives are delighted to visit schools and talk to students to answer any questions. Detailed talks on individual courses and services may also be organised.

If you wish to request a college visit, school visit or require further information, please contact our School Liaison Team: **T: 059 91 53200 E: [slo@carlowcollege.ie](mailto:slo@carlowcollege.ie)**

# STUDY WITH INSPIRATIONAL LECTURERS



**Dr. Thomas Mc Grath**

lectures in History. He holds a double doctorate and is the author of a number of books. He teaches courses on 'Nazi Germany and the Holocaust' and the 'History of Antisemitism before 1933'. He is Vice President for Academic Affairs and Registrar.



**Dr. Teresa Mulhern**

lectures in Psychology across a number of programmes and is a Board Certified Behavioural Analyst- Doctoral Level BCBA-D). Her area of research is in behavioural psychology, specifically Relational Frame Theory which considers how language and cognition is conceptualised in a behavioural framework. Her primary focus is in the area of autism and developmental disabilities and considering evidence-based practice in the area of behavioural support and early intervention.



**Dr. Lucy Bennett**

lectures on the principles and practices of Professional Social Care and on understanding and working with families. The aspect of her teaching which students find most inspiring are the stories which she tells from her many years of working in family support services, in the disability sector and in the Probation and Welfare service.



## Francis Gahan

works on the Applied Social Studies (Professional Social Care) programme where he uses his own practice experiences to shape the professional identity of others. His academic interests include the experiences of social care workers in practice, the intersection between political, professional and personal social care and the experiences of people and their families living with a disability.



## Damien McLellan

is a consultant psychotherapist and specialises in offering therapeutic interventions to children and young people with severe attachment issues. He is passionate about his work and brings the same passion to teaching and training others to continue this radical tradition of progressive care.



## Mary Dooley

coordinates teaching placement module on Arts and Humanities Programme and lectures in Biblical Studies. Her approach is on teaching and learning that fosters skills which assist students to be successful as employees and to clearly understand the integral relationship between educational theory and practice. By placing emphasis on autonomous learning and reflective skills the educational ideal is to train students who are self-directed and reflective.



# PROGRAMMES

Page 21

## Bachelor of Arts in Arts & Humanities

Course Code

Duration

PC402

3  
YEARS

Page 27

## Bachelor of Arts (Honours) in Arts & Humanities

Course Code

Duration

PC410

4  
YEARS

Page 33

## Bachelor of Arts (Honours) in English & History

Course Code

Duration

PC411

4  
YEARS

Page 39

## Bachelor of Arts in Applied Social Studies (Professional Social Care)

Course Code

Duration

PC404

3  
YEARS

Page 45

## Bachelor of Arts (Honours) in Applied Social Studies (Professional Social Care)

Course Code

Duration

ADD-ON

1  
YEARS

Page 51

## Bachelor of Arts (Honours) in Social, Political & Community Studies

Course Code

Duration

PC405

4  
YEARS

Page 57

## Master of Arts (Leadership in Therapeutic Child & Social Care)

Course Code

Duration

—

2  
YEARS  
PART-TIME

Page 61

## Master of Arts in Irish Regional History

Course Code

Duration

—

2  
YEARS  
PART-TIME

Page 65

## Postgraduate Diploma in Irish Regional History

Course Code

Duration

—

18  
MONTHS  
PART-TIME



# B.A. IN ARTS & HUMANITIES

## Course Code

PC402

## Minimum Entry Points

215

## Course Level

7

## Duration

3  
YEARS

## Average Intake

60

## Course Outline

The B.A. in Arts & Humanities is a 3 year flexible, multidisciplinary degree, offering a wide variety of subjects within five streams: History; Psychology; English, Creative Arts & Media Studies; Philosophy and Theology (and Teaching Placement).

In Year 1, students must study all five streams to gain an in depth overview of each of the disciplines that are offered in this programme. In Year 2, students will narrow their focus to three subjects and by Year 3 students will specialise in at least two subjects. Students will develop a unique and wide ranging perspective on their studies, which students can enhance with a semester of studying-abroad. Graduates of the degree are well-informed, versatile, independent thinkers with the information literacy, communication, research and interpersonal skills necessary for a wide range of careers or further academic study. Graduates of the B.A. in Arts and Humanities can progress to Year 4 of the B.A. (Honours) in Arts and Humanities.



The only Level 7 Arts programme of its kind in Ireland



Spend a semester abroad in Year 2 or 3 in one of our U.S. partner universities



The opportunity to explore a wide range of subjects before focusing on your area of interest



The opportunity to progress to Year 4 of a Level 8 degree



Small class sizes and friendly lecturers with subject expertise

# What will I study?

Subject Group	Year 1: Mandatory Modules		Year 2: Choose 6 modules in each semester	
	Semester 1	Semester 2	Semester 1	Semester 2
English, Creative Arts and Media Studies	<ul style="list-style-type: none"><li>Virtues of Poetry</li></ul>	<ul style="list-style-type: none"><li>Introduction to Fiction: Novel and Short Story</li></ul>	<ul style="list-style-type: none"><li>Theatre of the European Renaissance</li><li>Creative Writing: Poetry</li></ul>	<ul style="list-style-type: none"><li>Drama and Performance 1</li><li>Contemporary Irish Writing</li></ul>
History	<ul style="list-style-type: none"><li>Toolkit for History</li></ul>	<ul style="list-style-type: none"><li>Reimagining Ireland 1500-1700</li></ul>	<ul style="list-style-type: none"><li>Reimagining Modern Ireland 1700-1850</li><li>Revolutions in the Transatlantic World 1763-1877</li></ul>	<ul style="list-style-type: none"><li>Reimagining Modern Ireland 1850-2000</li><li>Nation States and Global Conflict 1877-1945</li></ul>
Philosophy	<ul style="list-style-type: none"><li>Ancient Greek Philosophy</li></ul>	<ul style="list-style-type: none"><li>Medieval Philosophy</li></ul>	<ul style="list-style-type: none"><li>General Ethics: Guiding Rules</li><li>Modern Philosophy 1600-1800</li></ul>	<ul style="list-style-type: none"><li>General Ethics: The Good Life</li><li>Modern Philosophy 1800-1960</li></ul>
Psychology	<ul style="list-style-type: none"><li>Psychology 1</li></ul>	<ul style="list-style-type: none"><li>Psychology 2</li></ul>	<ul style="list-style-type: none"><li>Child Developmental Psychology</li><li>Organisational Psychology</li></ul>	<ul style="list-style-type: none"><li>Educational Psychology</li><li>Social Psychology</li></ul>
Theology and Teaching Placement	<ul style="list-style-type: none"><li>Introduction to Theology</li></ul>	<ul style="list-style-type: none"><li>Theological Themes in World Literature, Cinema, and Music</li></ul>	<ul style="list-style-type: none"><li>Christology: Encountering Jesus of Nazareth</li><li>Biblical Studies</li></ul>	<ul style="list-style-type: none"><li>Christian Anthropology</li><li>Prophetic Literature of the Old Testament</li></ul>
Common Modules	<ul style="list-style-type: none"><li>Academic and Digital Skills</li></ul>	<ul style="list-style-type: none"><li>Arts and Humanities Seminar</li></ul>		

\* Denotes cyclical modules



Year 3: Choose 6 modules in each semester	
Semester 1	Semester 2
<ul style="list-style-type: none"><li>• Gothic Fiction</li><li>• American Literature</li><li>• Drama and Performance 2</li><li>• Media and Communications</li></ul>	<ul style="list-style-type: none"><li>• Modernism and Modernity</li><li>• Creative Writing: Advanced Poetry</li><li>• Media Studies: Film 1</li></ul>
<ul style="list-style-type: none"><li>• Ireland: Insurrection to Independence 1891-1923</li><li>• World War One: The Fall of Empires</li><li>• Migrations in Irish History / Violence, Law and Order in Modern Irish History*</li></ul>	<ul style="list-style-type: none"><li>• Ireland: Politics and Society 1923-1980</li><li>• Memory and Commemoration / Local History Project*</li><li>• The Politics of the Great Irish Famine</li><li>• The Rise of Fascism</li></ul>
<ul style="list-style-type: none"><li>• Political Philosophy 1</li><li>• Feminist Political Thought 1 / Humans and Other Animals*</li><li>• Existentialism: Philosophy and Literature</li></ul>	<ul style="list-style-type: none"><li>• Political Philosophy 2</li><li>• Feminist Political Thought 2 / Humans and Other Animals 2*</li><li>• Human Rights</li><li>• Philosophy of Religion</li></ul>
<ul style="list-style-type: none"><li>• Cognitive Psychology</li><li>• Abnormal Psychology</li><li>• Community Psychology</li></ul>	<ul style="list-style-type: none"><li>• Cognitive Psychology</li><li>• Clinical Psychology</li><li>• Research Methods</li><li>• Cyberpsychology</li></ul>
<ul style="list-style-type: none"><li>• Ecclesiology</li><li>• Fundamental Moral Theology</li><li>• The Synoptic Gospels</li></ul>	<ul style="list-style-type: none"><li>• God Question/ Trinity</li><li>• Religions, Conflict and Peace/ World Religions*</li></ul>
<ul style="list-style-type: none"><li>• Catechetics and Teaching Placement 1: Primary</li></ul>	

## Work Placement

Students on the B.A. in Arts and Humanities can take the work placement module in Religious Education, Catechetics and Placement 1. This module runs over the course of a full year, with the first half in the classroom and the second half of the year spent in a teaching placement. This module offers a chance to gain teaching experience at Primary level with our partner schools in the Carlow area.

## Career Prospects

Graduates of the B.A. in Arts and Humanities enjoy a wide range of careers in Media and Media Production, Marketing, Advertising, Public Relations, Information Technology, Travel and Tourism, Banking, Pastoral Care and the Civil Service. If you choose to go further with your studies and progress to Year 4 of the B.A. (Hons) in Arts and Humanities careers such as Teaching (Primary, Post-Primary, and Third Level), and further Post Graduate studies may be explored.

## Further Study

Graduates who achieve the qualifying mark in the B.A. in Arts and Humanities may choose to progress to the B.A. (Honours) in Arts and Humanities.





## Graduate Profile

Eva Burke

PhD Candidate & Teaching Assistant  
in Trinity College Dublin

“My experience at Carlow College was wonderful. It’s such a friendly and supportive environment, and the staff (from teaching staff to librarians, admin and catering) are great! One of the significant benefits of attending a smaller third level institution is that you never feel anonymous or alone – everybody knows your name, including lecturers, and it makes the college experience far less daunting than it might be at a bigger institution.

A degree in Humanities gives students who aren’t sure about their post-college plans great scope to make those choices when they’re ready – several of my classmates have gone on to teach at primary and secondary level, while others are historians or pursuing postgraduate qualifications in religious studies or psychology. It provides a great breadth of learning.

I have just finished the 3rd year of my PhD at TCD. I work as a Teaching Assistant in the English department during term time, which provides me with great experience, as I create a tutorial syllabus and work with groups of undergraduate students. I am also the recipient of an Irish Research Council postgraduate scholarship. I have had several articles published in academic journals, and in 2018 had a book chapter published. I have also had the opportunity to take part in various conferences, both at home and abroad, and have been invited to talk about my research at public events and podcasts!”



## Graduate Profile

SOPHIE DUNNE

Emirates, Cabin Crew

“Humanities gave me a deep understanding of the world in which we live in. Within this course I studied English, History, Theology, Philosophy, Ethics, Religion, Conflict and Peace, Critical Thinking, just to name a few. These subjects opened my eyes to the world beyond my own and I started to become aware of the different multicultural societies, world religions, and a way of thinking outside the box. This helped me to obtain the job I have today. Plus, Humanities looks excellent on your CV!

I enjoyed the enthusiasm of our lecturers. Each lecturer was an expert in their field and their devotion to the subject kept us hungry for more knowledge. For example, I studied Philosophy where some of the topics we discussed were so beyond anything I had ever learned before. In some cases, my class and I would be on the edge of our seats listening to phenomenal ideas by the world’s great Philosophers.

I now work as Cabin Crew for Emirates and I’m based in Dubai. My job requires me to be in contact with people from all over the world. Everyday I practise safety and security. I deal with situations that force me to think independently and critically and that is something I credit to my degree in Humanities at Carlow College.”



# B.A. (HONOURS) IN ARTS & HUMANITIES

Course Code

PC410

Minimum  
Entry Points

278

Course Level

8

Duration

4  
YEARS

Average  
Intake

60

## Course Outline

The B.A. (Hons) in Arts & Humanities is a 4 year flexible, multidisciplinary degree, offering a wide variety of subjects within five streams: History; Psychology; English, Creative Arts & Media Studies; Philosophy and Theology (and Teaching Placement).

In Year 1, students must study all five streams to gain an in depth overview of each of the disciplines that are offered in this programme. In Year 2, students narrow their focus to three subjects and by Years 3 and 4 students can specialise in at least two subjects. In Year 4, students have the opportunity to undertake a Research Thesis in one of their chosen specialisms. The degree will challenge your thinking about the world and the people who live in it. The degree focuses on contemporary social issues, the ways in which humans interact with these issues and how such actions can be monitored and modified. Students will be equipped with the skills and capabilities to deal with the challenges of our complex and evolving social and political world. The B.A. (Hons) in Arts and Humanities is the only programme of its kind in Ireland and has a reputation for producing highly skilled and successful graduates.



A unique programme offering a wide range of subjects



Spend a semester abroad in Year 2 or 3 in one of our U.S. partner universities



Specialise in subject areas relevant for your future career



Opportunities for work placement



Offers Exit Awards at Year 3

## What will I study?

Subject Group	Year 1: Mandatory Modules		Year 2: Choose 6 modules in each semester		Year 3: Choose 6 modules in each semester	
	Semester 1	Semester 2	Semester 1	Semester 2	Semester 1	Semester 2
English, Creative Arts and Media Studies	<ul style="list-style-type: none"> <li>Virtues of Poetry</li> </ul>	<ul style="list-style-type: none"> <li>Introduction to Fiction: Novel and Short Story</li> </ul>	<ul style="list-style-type: none"> <li>Theatre of the European Renaissance</li> <li>Creative Writing: Poetry</li> </ul>	<ul style="list-style-type: none"> <li>Drama and Performance 1</li> <li>Contemporary Irish Writing</li> </ul>	<ul style="list-style-type: none"> <li>Gothic Fiction</li> <li>American Literature</li> <li>Drama and Performance 2</li> <li>Media and Communications</li> </ul>	<ul style="list-style-type: none"> <li>Modernism and Modernity</li> <li>Creative Writing: Advanced Poetry</li> <li>Media Studies: Film 1</li> </ul>
History	<ul style="list-style-type: none"> <li>Toolkit for History</li> </ul>	<ul style="list-style-type: none"> <li>Reimagining Ireland 1500-1700</li> </ul>	<ul style="list-style-type: none"> <li>Reimagining Modern Ireland 1700-1850</li> <li>Revolutions in the Transatlantic World 1763-1877</li> </ul>	<ul style="list-style-type: none"> <li>Reimagining Modern Ireland 1850-2000</li> <li>Nation States and Global Conflict 1877-1945</li> </ul>	<ul style="list-style-type: none"> <li>Ireland: Insurrection to Independence 1891-1923</li> <li>World War One: The Fall of Empires</li> <li>Migrations in Irish History / Violence, Law and Order in Modern Irish History*</li> </ul>	<ul style="list-style-type: none"> <li>Ireland: Politics and Society 1923-1980</li> <li>Memory and Commemoration / Local History Project*</li> <li>The Politics of the Great Irish Famine</li> <li>The Rise of Fascism</li> </ul>
Philosophy	<ul style="list-style-type: none"> <li>Ancient Greek Philosophy</li> </ul>	<ul style="list-style-type: none"> <li>Medieval Philosophy</li> </ul>	<ul style="list-style-type: none"> <li>General Ethics: Guiding Rules</li> <li>Modern Philosophy 1600-1800</li> </ul>	<ul style="list-style-type: none"> <li>General Ethics: The Good Life</li> <li>Modern Philosophy 1800-1960</li> </ul>	<ul style="list-style-type: none"> <li>Political Philosophy 1</li> <li>Feminist Political Thought 1 / Humans and Other Animals*</li> <li>Existentialism: Philosophy and Literature</li> </ul>	<ul style="list-style-type: none"> <li>Political Philosophy 2</li> <li>Feminist Political Thought 2 / Humans and Other Animals 2*</li> <li>Human Rights</li> <li>Philosophy of Religion</li> </ul>
Psychology	<ul style="list-style-type: none"> <li>Psychology 1</li> </ul>	<ul style="list-style-type: none"> <li>Psychology 2</li> </ul>	<ul style="list-style-type: none"> <li>Child Developmental Psychology</li> <li>Organisational Psychology</li> </ul>	<ul style="list-style-type: none"> <li>Educational Psychology</li> <li>Social Psychology</li> </ul>	<ul style="list-style-type: none"> <li>Cognitive Psychology</li> <li>Abnormal Psychology</li> <li>Community Psychology</li> </ul>	<ul style="list-style-type: none"> <li>Cognitive Psychology</li> <li>Clinical Psychology</li> <li>Research Methods</li> <li>Cyberpsychology</li> </ul>
Theology and Teaching Placement	<ul style="list-style-type: none"> <li>Introduction to Theology</li> </ul>	<ul style="list-style-type: none"> <li>Theological Themes in World Literature, Cinema, and Music</li> </ul>	<ul style="list-style-type: none"> <li>Christology: Encountering Jesus of Nazareth</li> <li>Biblical Studies</li> </ul>	<ul style="list-style-type: none"> <li>Christian Anthropology: Prophetic Literature of the Old Testament</li> </ul>	<ul style="list-style-type: none"> <li>Ecclesiology</li> <li>Fundamental Moral Theology</li> <li>The Synoptic Gospels</li> </ul>	<ul style="list-style-type: none"> <li>God Question/ Trinity</li> <li>Religions, Conflict and Peace/ World Religions*</li> </ul>
Common Modules	<ul style="list-style-type: none"> <li>Academic and Digital Skills</li> </ul>				<ul style="list-style-type: none"> <li>Catechetics and Teaching Placement 1: Primary</li> </ul>	
	<ul style="list-style-type: none"> <li>Arts and Humanities Seminar</li> </ul>					

\* Denotes cyclical modules offered jointly to years 3 and 4 in alternate years.



Year 4: Choose 6 modules in each semester	
Semester 1	Semester 2
<ul style="list-style-type: none"><li>• Postmodern Literature</li><li>• Creative Writing: Fiction</li><li>• Creating Drama 1</li><li>• Media Studies: Film 2</li></ul>	<ul style="list-style-type: none"><li>• Modern Drama in Performance</li><li>• Postcolonial Writing</li><li>• Creating Drama 2</li></ul>
<ul style="list-style-type: none"><li>• ‘The Troubles’</li><li>• Europe and the US in the Post War World</li><li>• History of Antisemitism before 1933</li><li>• Migrations in Irish History /Violence, Law and Order in Modern Irish History*</li></ul>	<ul style="list-style-type: none"><li>• Irish Elections and Propaganda 1918-1937</li><li>• Nazi Germany and the Holocaust</li><li>• Memory and Commemoration/ Local History Project*</li></ul>
<ul style="list-style-type: none"><li>• Critical Theory 1</li><li>• Feminist Political Thought 1 / Humans and Other Animals*</li><li>• Philosophy &amp; Psychoanalytic Theory 1</li><li>• Philosophy, Law and Punishment</li></ul>	<ul style="list-style-type: none"><li>• Critical Theory 2: Language and Self</li><li>• Feminist Political Thought 2 / Humans and Other Animals 2*</li><li>• Philosophy &amp; Psychoanalytic Theory 2</li></ul>
<ul style="list-style-type: none"><li>• Forensic Psychology</li><li>• Health Psychology</li><li>• Advanced Social Psychology</li><li>• Personality Psychology</li></ul>	<ul style="list-style-type: none"><li>• Applied Criminal Psychology</li><li>• Counselling Psychology</li><li>• Positive Psychology</li></ul>
<ul style="list-style-type: none"><li>• Applied Christian Ethics</li><li>• Sacramental Theology</li></ul>	<ul style="list-style-type: none"><li>• God Question/ Trinity</li><li>• Religions, Conflict and Peace/ World Religions*</li><li>• Johannine Writings</li></ul>
<ul style="list-style-type: none"><li>• Catechetics and Teaching Placement 2: Post Primary</li></ul>	
<ul style="list-style-type: none"><li>• Seminar and Dissertation</li></ul>	

## Work Placement

The B.A. (Hons) in Arts and Humanities has two unique work placement modules in Religious Education: Catechetics and Placement 1 (Year 3-Primary) and Catechetics and Placement 2 (Year 3-Post Primary). These modules run over the course of a full year, with the first half in the classroom and the second half of the year spent in a teaching placement. These modules offer opportunities to gain teaching experience at both Primary and Post-Primary level with our partner schools in the Carlow area.

## Career Prospects

Graduates of the B.A. (Honours) in Arts and Humanities are highly employable and have progressed to a wide range of careers. Some of these careers include: Teaching (Primary, Post-Primary, and Third Level), Media and Media Production, Journalism, Marketing, Advertising, Public Relations, Librarianship, Archives, Information Technology, Politics, Travel and Tourism, Banking, Pastoral Care, Counselling, and the Civil Service.

## Further Study

Graduates of the B.A. (Hons) in Arts and Humanities have successfully gone on to a wide variety of Level 9 postgraduate courses in areas such as English, History, Philosophy, Psychology, Theology, Media, Journalism, Marketing, Administration, Teacher-training (Primary and Post-Primary), Advertising, Librarianship, Archives. Graduates have also continued their academic studies through to PhD level.





## Graduate Profile

Thomas English

English Teacher & Assistant Head Teacher,  
British International School of Moscow

"My time at Carlow College, St. Patrick's aided me greatly, not only in my future career but in life in general. I had never truly spoken out loud much in class when I was in school. Something which I would never allow happen in my classroom, because learning to express yourself orally and through your written work is something that I demand from my students. I learnt the value of these expectations at Carlow College. You should never be just a passenger in your own education.

The range of skills that I gained throughout my four year degree challenged me at the time and made me very focused on improving my self-confidence and wider social skills outside of a sport setting, which was my main background before joining the College. The small year group and close quarters of the tutorials, meant that you would never be just a number. As a result of the closeness and family atmosphere of the College I have gained a very good education and lifelong friendships.

The Humanities programme was very engaging and opened up my ability to think critically and gain an appreciation for what it is to really learn and not just regurgitate information. In school I had always learnt things off but didn't really think about them, that changed in Carlow College."



## Graduate Profile

Roisín Maguire

Entitlement Officer, Department of Foreign Affairs

“Carlow College is a fantastic academic college with some of the best lecturers! It provides great support to all students and there is a great sense of community that you don’t really get in bigger institutions. It has a beautiful campus with great resources. I really enjoyed Philosophy! I took predominantly Philosophy subjects in my last two years at Carlow College and I set up the Philosophical Society in the college. Noel Kavanagh was a huge support! I wouldn’t have my Masters or be where I am today in my career if it wasn’t for Noel!

When I graduated from Carlow College, I got a job working for Sky Ireland, I was in Sky for 5 years and last year I was one of the first people in Ireland to trial Fibre to the home Broadband. It was a brand new trial team and it was very successful. I then started in the Department of Foreign Affairs in January 2019 and recently worked on a new project for the consular crisis management team. The project aims to manage and improve issues that arise from crisis situations, happening either abroad or at home in Ireland i.e. natural disasters, terrorists attacks etc.

I personally believe if I had not gone to Carlow College, I would not have a degree today. My life at Carlow College was fantastic and I only look back with such fond memories of the place.”



# B.A. (HONOURS) IN ENGLISH & HISTORY

## Course Code

PC411

## Minimum Entry Points

270

## Course Level

8

## Duration

4  
YEARS

## Average Intake

30

## Course Outline

The B.A. (Hons) in English and History is an exciting and challenging 4-year honours degree, where students specialise in the English language and its literature, and immerse themselves in the history of Ireland, Europe and the wider world.

The structure of this degree gives students a solid foundation in both English literature and History in Years 1 and 2, before enabling them to specialise in either English or History, or to keep a balance between the two subjects in years three and four. The degree gives students crucial tools needed for the twenty-first century by nourishing an appreciation for critical thinking, by developing strong digital, oral and written communication skills, and by fostering the value of creativity.



Students are immersed in two subjects from foundation to specialisation



Spend a semester abroad in Year 2 or 3 in one of our U.S. partner universities



Chart your own journey with a wide variety of electives



Employability modules enhance skills and experience in professional areas



Offers Exit Awards in Year 3

# What will I study?

Year 1: Mandatory Modules		Year 2: Mandatory Modules		Year 3	
Semester 1	Semester 2	Semester 1	Semester 2	Semester 1	Semester 2
<ul style="list-style-type: none"><li>• Introduction to Literature</li><li>• Virtues of Poetry</li><li>• Toolkit for History</li><li>• Re-Imagining Early and Medieval Ireland</li><li>• Medieval Europe: Crusades, Conflict and Crises</li></ul>	<ul style="list-style-type: none"><li>• Introduction to Drama and Theatre</li><li>• Introduction to Fiction</li><li>• Irish Writing 1960-1990</li><li>• Debating History</li><li>• Re-Imagining Ireland (1500-1700)</li><li>• The Age of Exploration in the Early Modern Period 1492-1763</li></ul>	<ul style="list-style-type: none"><li>• Critical Approaches to Literature</li><li>• Theatre of the European Renaissance</li><li>• Romantic Poetry</li><li>• Public History and Cultural Heritage</li><li>• Re-Imagining Ireland 1700-1850</li><li>• Revolutions in the Transatlantic World 1763-1877</li></ul>	<ul style="list-style-type: none"><li>• The Eighteenth-Century Novel</li><li>• Contemporary Irish Writing</li><li>• American Literature 1</li><li>• Nation States and Global Conflict 1877-1945</li><li>• Re-Imagining Ireland 1850-2000</li></ul>	<b>Mandatory Modules</b> <ul style="list-style-type: none"><li>• American Literature 2</li><li>• Gothic Fiction</li><li>• World War One: The Fall of Empires</li><li>• Ireland: Insurrection to Independence</li><li>• Literature of the Victorian Age</li><li>• Modernism and Modernity</li><li>• The Rise of Fascism</li><li>• Ireland: Politics and Society 1923-1970</li></ul>	
				<b>Choose 2 modules in each semester</b>	
				<ul style="list-style-type: none"><li>• Literature and Revolution in Ireland 1890-1937/The Politics of Irish Literature 1798-1898 *</li><li>• Migrations in Irish History, 1700 - present/Violence, Law and Order in Modern Irish History *</li><li>• Women in Medieval Europe/ Making a living in Medieval Ireland *</li><li>• Political Philosophy 1</li></ul>	<ul style="list-style-type: none"><li>• Gender and Sexuality in Post 60s Irish Culture and Writing/ The Literature of the Troubles *</li><li>• Creative Writing: Advanced Poetry</li><li>• The Politics of the Great Irish Famine</li><li>• Local History Project/ History, Memory and Commemoration*</li></ul>
<b>Skills module:</b> Academic and Digital Skills		<b>Skills module:</b> Career Skills		<b>Skills module:</b> Career Practice	

### Year 4: Choose 6 modules in each semester

Semester 1	Semester 2
<ul style="list-style-type: none"> <li>• Creative Writing: Fiction</li> <li>• Postmodern Literature</li> <li>• Post-War British and American Poetry</li> <li>• Literature and Revolution in Ireland 1890-1937/The Politics of Irish Literature 1798-1898*</li> <li>• History of Antisemitism before 1933</li> <li>• The Troubles, From Conflict to Conciliation</li> <li>• Europe and the United States in the Post War World, 1945-2000</li> <li>• Migrations in Irish History from 1700 onwards/Violence Law and Order in Modern Irish History*</li> <li>• Women in Medieval Europe/ Making a Living in Medieval Ireland*</li> </ul>	<ul style="list-style-type: none"> <li>• Modern Drama in Performance</li> <li>• Critical Theory: Language and Self</li> <li>• Gender and Sexuality in Post 60s Irish Culture and Writing/ The Literature of the Troubles*</li> <li>• Postcolonial Writing</li> <li>• Nazi Germany and the Holocaust</li> <li>• Irish Elections and Propaganda 1918-1937</li> <li>• Local History Project/ History, Memory and Commemoration*</li> </ul>

\* Cyclical modules

\* Co-requisite with Postmodern Literature

**Skills module:** Seminar & Dissertation



## Work Placement

Students on the B.A. (Hons) in English & History have the unique opportunity to engage in work placement in Year 3 through the Career Practice module. This module aims to enhance students' employability and skills through real-life work experience in a variety of careers.

## Career Prospects

Graduates of the B.A. (Hons) in English and History are highly employable and have progressed to a wide range of careers. Some of these careers include: Teaching (Primary and Post-Primary), Media and Media Production, Journalism, Marketing, Advertising, Public relations, Librarianship, Archives, Information Technology, Management, Finance, and the Civil Service.

## Further Study

Graduates of the B.A. (Hons) in English and History have successfully gone on to a wide variety of Level 9 postgraduate courses in areas such as English, History, Media, Journalism, Marketing, Teacher-training (Primary and Post-Primary), Advertising, Administration, Librarianship, Archives. Graduates have also continued their academic studies through to PhD level.





## Graduate Profile

Áine O'Neill

Television Producer, Peninsula Television

"I chose to study English & History as I loved the variety of subjects within the disciplines. I also think the course instantly stands out on a job application. When people see English they think, well-read and good writer. When they see History they think, good at researching and an interest in detail. These are qualities that make you an attractive candidate to employers.

The memories I made at Carlow College will forever make me smile. I walked into the college with little education, not much confidence and no academic strengths. I skipped out with lifelong friends, a degree in English and History and the confidence to pursue the career I really wanted. I will be forever grateful to the staff and lecturers of Carlow College for that.

I was lucky enough to go straight into a job that I had wanted since I was a young girl. I finally had the confidence to apply and I had the education to back me up. I started working on various shows for RTE and TV3. I've worked on so many exciting projects including TV shows: entertainment, reality, observational documentaries, hidden camera etc... I have worked on the IFTA red carpet four or five times. I loved that, I interviewed so many different people! I am currently working as a TV Producer with Peninsula television. I am an Assistant Producer on the TV show, Evidence of Evil on CBS Reality. I also run a small casting agency called O'Neill Casting."



## Graduate Profile

Joseph Farrelly

Post-Primary Teacher

"I chose Carlow College, St. Patrick's because it allowed me to study a broad range of subjects, which left me with a lot of options career wise. This enabled me to study a HDip. in Education in Trinity College, Dublin after graduation and a term as Students' Union President in 2013. I am now a Secondary School Teacher in St. Oliver's Community College in Drogheda.

The experience of a term as SU President, varied subjects and the opportunities to get involved in all aspects of student life, allowed me to find work part-time in the fitness industry while I studied to become a teacher. I would describe Carlow College as a community based learning environment where you are more than just a number. If you throw yourself into everything you will develop on a personal level and gain the skills essential for a successful career. I loved the Teaching Practice and Media Studies modules. The help and support I received on my thesis was also invaluable.

I would really advise students to get involved in everything as doing nothing will lead to nothing!"



# B.A. IN APPLIED SOCIAL STUDIES (PROFESSIONAL SOCIAL CARE)

Course Code

PC404

Minimum  
Entry Points

236

Course Level

7

Duration

3  
YEARS

Average  
Intake

70

## Course Outline

The B.A. in Applied Social Studies (Professional Social Care) has, as its primary aim, the preparation of students for professional Social Care Work. The area of Social Care is emerging as a professional field in its own right.

Social Care Workers plan and provide professional care to vulnerable individuals and groups of all ages who experience marginalisation, disadvantage or special needs. As well as protecting and advocating for such individuals and groups, Social Care Workers professionally guide, challenge, support and advocate for those entrusted to their care.

This programme builds a strong knowledge base, develops core professional skills and promotes personal and professional development to enable graduates to take up employment positions across a variety of sectors in the professional provision of social care.



On successful completion of Year 3 graduates are prepared for Professional Social Care work



Over 800 hours of supervised Practice Placements in Years 2 and 3 with dedicated preparation and support



Programme content that is closely aligned with the Standards of Proficiency for Social Care Workers



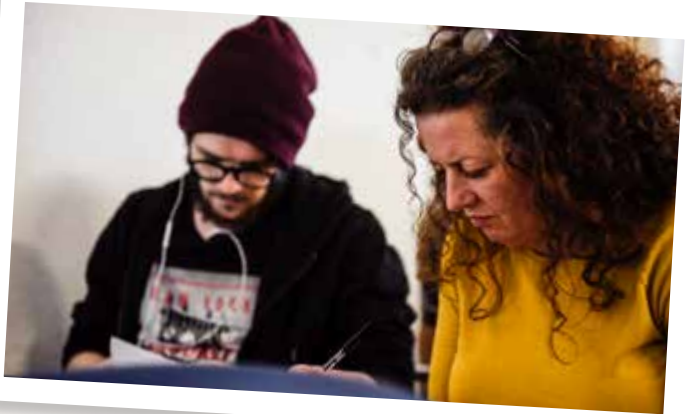
The opportunity to progress to the 1-year 'add-on' B.A. (Honours) in Applied Social Studies (Professional Social Care) programme

# What will I study?

Year 1: Mandatory Modules	
Semester 1	Semester 2
<ul style="list-style-type: none"><li>• Communication and People Skills</li></ul>	<ul style="list-style-type: none"><li>• Creative Studies: The Arts and Social Care</li></ul>
<ul style="list-style-type: none"><li>• Creative Studies: Exploring Creativity</li></ul>	<ul style="list-style-type: none"><li>• Introduction to Developmental Psychology</li></ul>
<ul style="list-style-type: none"><li>• Introduction to Academic and Digital Skills</li></ul>	<ul style="list-style-type: none"><li>• Introduction to Disability</li></ul>
<ul style="list-style-type: none"><li>• Introduction to Professional Social Care</li></ul>	<ul style="list-style-type: none"><li>• Introduction to Irish Government and Politics</li></ul>
<ul style="list-style-type: none"><li>• Introduction to Psychology</li></ul>	<ul style="list-style-type: none"><li>• Principles and Practice of Social Care 1</li></ul>
<ul style="list-style-type: none"><li>• Introduction to Sociology</li></ul>	<ul style="list-style-type: none"><li>• Sociology and Contemporary Society</li></ul>

Year 2: Mandatory Modules	
Semester 1	Semester 2
<ul style="list-style-type: none"><li>• Practice Placement and Portfolio 1</li></ul>	<ul style="list-style-type: none"><li>• Ethics for Social Care</li></ul>
	<ul style="list-style-type: none"><li>• Group Dynamics and Facilitation</li></ul>
	<ul style="list-style-type: none"><li>• Interculturalism and Cultural Competence</li></ul>
	<ul style="list-style-type: none"><li>• Irish Social Policy</li></ul>
	<ul style="list-style-type: none"><li>• Legal Studies 1</li></ul>
	<ul style="list-style-type: none"><li>• Principles and Practice of Social Care 2</li></ul>
	<ul style="list-style-type: none"><li>• Social Psychology</li></ul>

Year 3: Mandatory Modules	
Semester 1	Semester 2
<ul style="list-style-type: none"><li>Abnormal and Clinical Psychology</li></ul>	<ul style="list-style-type: none"><li>Practice Placement and Portfolio 2</li></ul>
<ul style="list-style-type: none"><li>Child and Family Perspectives</li></ul>	
<ul style="list-style-type: none"><li>Communication and Counselling Skills</li></ul>	
<ul style="list-style-type: none"><li>Contemporary Issues in Social Policy</li></ul>	
<ul style="list-style-type: none"><li>Legal Studies 2</li></ul>	
<ul style="list-style-type: none"><li>Principles and Practice of Social Care 3</li></ul>	
<ul style="list-style-type: none"><li>Research Methods</li></ul>	



### Work Placement

Students have two mandatory 13-week block placements in Years 2 and 3 on the B.A. in Applied Social Studies (Professional Social Care). The theory learned in the classroom is applied in the work setting and the students benefit from the expertise of professionals who demonstrate the necessary skills and techniques used by Social Care Practitioners. Our placement co-ordinators here in the College will help find a suitable setting for you.

### Career Prospects

As a Social Care worker you may work with children and adolescents in residential care; young people in detention schools; people with intellectual or physical disabilities; people who are homeless; people with alcohol/drug dependency; families in the community; or older people. Working with others as part of a professional team, the aim is to help people to achieve their fullest potential.

### Further Study

Most graduates of the B.A. in Applied Social Studies (Professional Social Care) progress to the B.A. (Hons) in Applied Social Studies (Professional Social Care). This is a 1 year ‘add-on’ programme which leads to a level 8 qualification.





## Graduate Profile

Darragh Fitzpatrick

Outreach Social Care Worker,  
Tusla Child and Family Agency

"Following a number of years in different employments, I began voluntary work in a homeless shelter and found it very rewarding. Therefore, after a little research I decided to pursue a career working with people where I could hopefully make a difference. I choose Carlow College because of its reputation for producing quality Social Care graduates and I also loved the personal feel and welcoming atmosphere of the College. The practical work placements during the programme were crucial in allowing me to apply the theoretical elements learned in the lectures into a variety of Social Care work environments.

Throughout the programme, support from individual lecturers was invaluable in terms of their professional experience and general guidance. I currently work as an Outreach Social Care Worker with Tusla Carlow/Kilkenny & South Tipperary community care areas. I complete specific interventions with young people including emotional support, substance misuse, self-esteem & personal development to name a few. I work closely with other agencies, parents/ carers, foster parents and Social Workers. Although stressful and personally challenging at times, a career in Social Care is extremely rewarding and offers a real opportunity for growth and fulfilment."



## Graduate Profile

Amy Fitzgerald

Domestic Violence Support Worker,  
Teach Tearmainn Women's Refuge

"I had been made redundant in 2010, and following a period of short-term jobs, I realised that I would have to re-train in order to secure a career. I realised that I really wanted to work in an area where I could feel that I was "giving something back". The vast choices of career within Social Care really appealed to me! I chose Carlow College because it was a small College that specialised in Social Care. I felt that I was guided and encouraged at every step of my college journey. I liked that the lecturers knew my name! The highlight of my time at Carlow College was receiving the award for academic achievement at graduation! I have never felt prouder of myself.

I am currently a Domestic Violence Support Worker at Teach Tearmainn Women's Refuge. I provide support to women experiencing domestic abuse. This includes providing one-to-one support, court accompaniment, advocacy, outreach and everything beyond and in between!

Only when leaving College and supporting students from other institutions did I truly recognise the calibre of lecturers at Carlow College. The work that we did, and the way that we were taught is, in my opinion, leagues ahead of some other colleges. It's small but perfectly formed!"



# B.A. (HONOURS) IN APPLIED SOCIAL STUDIES (PROFESSIONAL SOCIAL CARE)

## Course Level

8

## Duration

1  
YEAR

## Average Intake

70

## Course Outline

This programme is a 1 year 'add-on' level 8 degree for graduates of the B.A. in Applied Social Studies (Professional Social Care) or equivalent programmes. This programme broadens students' understanding of Social Care Theory and Practice; it deepens their knowledge and skill base for evidence-based practice; and it offers an opportunity to research their own area of interest within the broad Social Care field.

There is a particular emphasis on enhancing students' employability skills, professional development and leadership capacity with the *Employability Skills Module*.

## Application

Applicants must hold a B.A. level 7 degree in Applied Social Studies from Carlow College, St. Patrick's or equivalent from elsewhere. All applications are made directly to Carlow College, St. Patrick's.

For more information, please contact:  
admissionscc@carlowcollege.ie



The Research and Dissertation module gives students the opportunity to carry out supervised field research with the guidance of one to one supervision



Small class sizes enable you to get to know and work closely with your classmates and lecturers



Graduates have progressed to postgraduate studies in the areas of Social Work, Research, Social Policy, Education and Community Work



Graduates have a high level of success in securing employment in their preferred area of work, and many have developed their careers to leadership positions

# What will I study?

Mandatory Modules	
Semester 1	Semester 2
<ul style="list-style-type: none"><li>Approaches to Working with Children</li></ul>	<ul style="list-style-type: none"><li>Approaches to Working with Families</li></ul>
<ul style="list-style-type: none"><li>Contemporary Sociological Theory</li></ul>	<ul style="list-style-type: none"><li>Professional Development and Employability Skills</li></ul>
<ul style="list-style-type: none"><li>Dissertation and Seminar</li></ul>	<ul style="list-style-type: none"><li>Dissertation and Seminar</li></ul>
<ul style="list-style-type: none"><li>Equality and Diversity</li></ul>	<ul style="list-style-type: none"><li>Quality Management in Social Care</li></ul>
<ul style="list-style-type: none"><li>Leadership and Management: Theory and Practice</li></ul>	

Elective Modules
Semester 2: Choose 1 elective module
• Creative Interventions (Music)
• Community Mental Health and Well-Being
• Youth and Community Studies
• Working with Older People



### Career Prospects

Professional Social Care Workers engage with various client-groups such as children, adolescents and older people in residential care; people with learning or physical disabilities; minority groups; addiction and homeless services; family support; and recent immigrants to Ireland.

### Further Study

Many graduates of the B.A. (Honours) in Applied Social Studies (Professional Social Care) have successfully progressed to a wide variety of Level 9 Postgraduate courses in the areas of: Social Care Management; Social Work; Counselling; Psychotherapy; Playtherapy; and Health Promotion. Graduates have also continued their academic studies through to PhD level.



## Graduate Profile

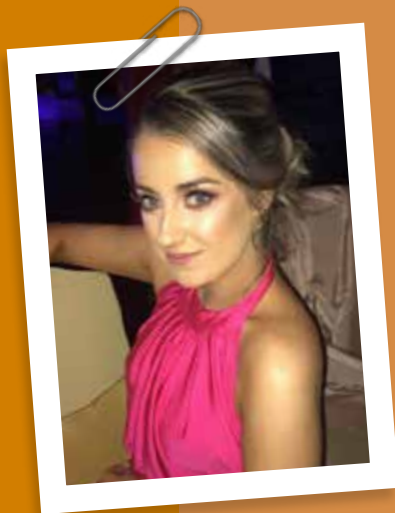
Katie Murphy

Project Worker, Peter McVerry Trust

“The placement opportunities available on the Social Care degree open you up to a world of possibilities. My placement co-ordinator supported me in choosing a placement suited to my learning needs and personal interests.

Over the course of the two 13 week placements, I gained invaluable practical experience, that has enhanced my development as a professional. I completed my 3rd year placement in the Peter McVerry Trust and eventually went on to complete their graduate programme after my degree. I am currently a Project Worker in Kerdiffstown House, a new one-of-a-kind service for the Peter McVerry Trust. I am fortunate enough to be a part of the opening team who are setting up and running the service.

My role as a Project Worker involves carrying out health and safety checks, risk assessments, relationship building with residents of the service, key-working with assigned key-clients, support plans, the day-to-day management of a residential service i.e. cleaning and cooking, conflict resolution, managing challenging behaviour and administration. Social Care as a profession is both rewarding and challenging. It is diverse in its nature and I appreciate that no two days are the same. This makes it a stimulating career.”



## Graduate Profile

Kim McCann

Social Care Worker, Autism Initiatives

"I had always been interested in going into a caring profession and when I finished school I decided Social Care would be a good choice for me. I choose Carlow College because it was a smaller college compared to other institutions. After only finishing secondary school I found it a bit daunting leaving my school friends and starting my new journey. On my first day of college, I found it really easy to chat to people and during the first few weeks I kept seeing familiar faces, which I liked.

Carlow College is a small friendly college. Everyone knows everybody's name. The support I received from lecturers was phenomenal throughout the four years. I really enjoyed the diversity of modules. I went out on placement twice throughout my degree and I found this hugely beneficial as it allowed me to get a sense of the different areas to work within Social Care. The highlight of my time in Carlow College was learning so much about all the different aspects of Social Care through the many different modules and gaining amazing friendships that I will carry with me for life.

I currently work as a Social Care Worker in a residential unit in Stillorgan, South Dublin. I work with adult males with Autism and Schizophrenia. I support them in their home and community on a daily basis. Our main goal is to promote independence in the community."



# B.A. (HONOURS) IN SOCIAL, POLITICAL & COMMUNITY STUDIES

## Course Code

PC405

## Minimum Entry Points

276

## Course Level

8

## Duration

4  
YEARS

## Average Intake

25

## Course Outline

The B.A. (Honours) in Social, Political and Community Studies is a 4-year honours degree programme focused on three dynamic and interconnected areas: Politics, Society and Community. This degree is an interdisciplinary programme that combines training in the practical skills of community development, advocacy, policy analysis, negotiation and mediation with an exploration of the social and political concepts that inform these fields, and is extremely relevant to the social and political concerns of contemporary society.

- 1) Are you curious about Human Rights, Social Justice and the role of politics in shaping big issues, including power, inequality, and inclusion?
- 2) Are you searching for a course that demands both academic and vocational qualities?
- 3) Are you interested in understanding contemporary social and community issues and have a desire to make a positive difference?

This unique degree was developed for those who wish to understand the role of politics in shaping society, including power, conflict and inequality. It will transform students into specialists in the field of politics at the levels of both theory and practice, and enable them to participate in the practical and theoretical debates in the field. Community activists will gain a thorough understanding of community development combined with the practical skills necessary for development work.

Students have the opportunity to acquire skills and training in a range of areas including project management and evaluation, communications, human rights, public relations, sociology, advocacy, and contemporary politics. This course is for future leaders of social and political movements in their communities – students who wish to be both challenged and wish to challenge societal injustice from a local to a global level.



Engages students in social, political, cultural, economic and environmental issues in response to our global world



Develop skills around teamwork and leadership through community projects, internships and work placements



Inspires students to be creative in their thinking and actions



Offers Exit Awards in Years 2 and Years 3

# What will I study?

Year 1: Mandatory Modules		Year 2: Mandatory Modules		Year 3	
Semester 1	Semester 2	Semester 1	Semester 2	Semester 1	Semester 2 (all mandatory)
<ul style="list-style-type: none"><li>• Communication and People Skills</li></ul>	<ul style="list-style-type: none"><li>• Citizenship and Civil Society</li></ul>	Community Arts: Theory and Practice		<ul style="list-style-type: none"><li>• International Development: From Colonialism to Development</li></ul>	<ul style="list-style-type: none"><li>• Internship</li></ul>
<ul style="list-style-type: none"><li>• General Ethics: Guiding Rules</li></ul>	<ul style="list-style-type: none"><li>• General Ethics: The Good Life</li></ul>	<ul style="list-style-type: none"><li>• Equality and Diversity</li></ul>	<ul style="list-style-type: none"><li>• Advocacy Skills in Practice</li></ul>	<ul style="list-style-type: none"><li>• Media and Communications 1</li></ul>	<ul style="list-style-type: none"><li>• Political Philosophy: From Enlightenment to Communitarianism</li></ul>
<ul style="list-style-type: none"><li>• Introduction to Academic and Digital Skills</li></ul>	<ul style="list-style-type: none"><li>• Group Dynamics and Facilitation</li></ul>	<ul style="list-style-type: none"><li>• Introduction to Advocacy</li></ul>	<ul style="list-style-type: none"><li>• Social Psychology</li></ul>	<ul style="list-style-type: none"><li>• Research Methods</li></ul>	<ul style="list-style-type: none"><li>• International Legal Studies *</li></ul>
<ul style="list-style-type: none"><li>• Community Concepts</li></ul>	<ul style="list-style-type: none"><li>• Approaches to Working with Communities</li></ul>	<ul style="list-style-type: none"><li>• Introduction to Economic and Social Analysis</li></ul>	<ul style="list-style-type: none"><li>• Human Rights: A Philosophical Approach</li></ul>	<ul style="list-style-type: none"><li>• International Peace and Conflict Studies</li></ul>	<ul style="list-style-type: none"><li>• Youth and Community Studies *</li></ul>
<ul style="list-style-type: none"><li>• Introduction to Political Ideology</li></ul>	<ul style="list-style-type: none"><li>• Irish Government and Politics</li></ul>	<ul style="list-style-type: none"><li>• Community Psychology</li></ul>	<ul style="list-style-type: none"><li>• Irish Social Policy</li></ul>	<ul style="list-style-type: none"><li>• Political Philosophy and Secular Belief Systems</li></ul>	<ul style="list-style-type: none"><li>• Community Mental Health and Well-being*</li></ul>
<ul style="list-style-type: none"><li>• Introduction to Sociology</li></ul>	<ul style="list-style-type: none"><li>• Sociology and Contemporary Society</li></ul>		<ul style="list-style-type: none"><li>• Legal Studies</li></ul>	<ul style="list-style-type: none"><li>• Leadership and Management: Theory and Practice</li></ul>	<ul style="list-style-type: none"><li>• Media and Communications 2*</li></ul>

\* Denotes electives.



Year 4	
Semester 1 (all mandatory)	Semester 2
Dissertation and Seminar	
<ul style="list-style-type: none"> <li>Sustainability and Community Resilience</li> </ul>	<ul style="list-style-type: none"> <li>Religion, Conflict and Peace</li> </ul>
<ul style="list-style-type: none"> <li>International Development: From Development to Globalisation</li> </ul>	<ul style="list-style-type: none"> <li>Project Management and Evaluation</li> </ul>
<ul style="list-style-type: none"> <li>Mediation, Negotiation and Peacebuilding</li> </ul>	<ul style="list-style-type: none"> <li>Community Mental Health and Well-being*</li> </ul>
<ul style="list-style-type: none"> <li>Social Movements, Activism and Social Change</li> </ul>	<ul style="list-style-type: none"> <li>Media and Communications 2*</li> </ul>
<ul style="list-style-type: none"> <li>Creativity and Social Media</li> </ul>	<ul style="list-style-type: none"> <li>International Legal Studies*</li> </ul>
	<ul style="list-style-type: none"> <li>Youth and Community Studies*</li> </ul>

## Work Placement

The degree includes practical modules in each Year such as facilitation, advocacy, project planning. There are also specific project and placement modules. In Year 2 of the programme the Community Arts module is based on students undertaking a practical group project in collaboration with external organisations/communities. In Year 3 the Internship module involves students undertaking an individual placement which is dedicated to furthering a particular social cause or advocating for a shared point of view. This Internship takes place 4 days per week for the duration of one semester.

## Career Prospects

The degree programme aims to support students to progress to employment in a wide variety of sectors. The expected career destinations include: Professional Youth and Community Worker; Community Development Worker; Community Project Coordinator; Human Rights and Public Policy; Advocacy; Intercultural & Equality Officer; Social Worker; Sociologist; Social Researcher; Journalism; Public Relations; Political Researcher; Political Campaign Manager; and Political Candidate.

## Further Study

The degree programme provides a solid foundation for further study and research in areas such as: Politics and International Relations; Peace and Conflict, Equality, Advocacy and Inclusion; Globalisation; Sustainability; Media and Communications; Sociology; Social Policy; Social Work; and Social Justice.





## Graduate Profile

Stephanie Hanlon

Policy Development & Education

"I really enjoyed my experience as a student in Carlow College. Staff and students are on a first name basis and can afford to dedicate time to intensive topics, contributing to the overall quality of education. In Carlow College no student is left behind.

One of the highlights in Carlow College was the lasting friendships I have made. Carlow College has a tight knit alumni and no-one ever truly leaves Carlow College! I left the course feeling passionate about human rights, advocacy and worked with various projects in Ireland and abroad. I was a scholarship student in UCD where I pursued a Master's Degree in Political Science and started teaching.

My experience in Carlow College motivated me to take an active role in society. I knew exactly what I wanted to do after my time in Carlow College, which taught me to pursue my passion in challenging inequality in all forms. I currently work in the area of Policy Development & Education: I wear different hats depending on the job! I work in policy development on disability, women's rights and immigration and I facilitate workshops on Politics and Society to Leaving Cert students.

There is no such thing as a typical day of work for me! I have been lucky to work on projects that have excited me since I began working; I was the Irish and European No Hate Speech Ambassador; I worked with the Council of Europe to develop policy on gender based hate speech; I was the Director of Elections in Carlow and Kilkenny for the referendum on the 8th Amendment; I was a campaign manager for the Local and European elections in 2019 for Adrienne Wallace who successfully won a seat in Carlow County Council; Working with Epilepsy Ireland to campaign for free travel for people who are not able to drive due to epilepsy and working with residents in direct provision centres in Ireland."



## Graduate Profile

Sandra Byrne

Community Support Worker, Rehab Care Group

"I currently work as a Community Support Worker with Rehab Care Group. My work revolves around promoting inclusion, empowerment, advocating for vulnerable people and groups and helping vulnerable persons to gain a better quality of life. These are all skills I learned throughout my degree at Carlow College.

I left school at a very young age and never completed my Leaving Cert. I always knew I had the potential to go on to third level but was never given the chance. As a struggling single parent I wanted a better life for me and my son so I decided to return to education. I decided to apply to Carlow College, St. Patrick's and from the moment I walked through the doors I knew that this was the college for me. I felt so at home there and the level of support I received from my Programme Director and lecturers was second to none.

I went into this College with very low self-esteem and very little confidence and throughout the four years I became a truly better version of myself. I would love to return to the College to complete the M.A. (Leadership in Therapeutic Child and Social Care) in the near future."



# M.A. (LEADERSHIP IN THERAPEUTIC CHILD AND SOCIAL CARE)

## Course Level

9

## Duration

2  
YEARS  
PART TIME

## Cost

€4,900  
PER ANNUM

## Course Outline

The M.A. (Leadership in Therapeutic Child and Social Care) is a unique multi-disciplinary course for experienced child and Social Care practitioners currently working with emotionally troubled children, adults and their families in a wide variety of settings. We believe that the personal development element of our course is as important as the professional and academic elements. While the course is not a training in psychotherapy, it is more comparable to such a training than to any other taught M.A. programme. For example, the course day begins with a personal check-in, has an experiential group at its centre and closes with a check-out.

## Who is this programme for?

This programme is for qualified practitioners in Social Care (and similar professions) who wish to work therapeutically and at a deeper level. They may be leading or intending to lead and want to make a difference. And they may already suspect that, 'home is where we start from'.



The course utilises a psychodynamic understanding of troubled people and their families and of the services that support and assist them



Consciously models the therapeutic and safe space that students should aspire to creating in their work setting



Strong focus on the therapeutic community model of practice and its application in different agencies and settings



Emphasis on shared learning in a cooperative rather than competitive atmosphere

# What will I study?

## Course Content

Year 1: Mandatory Modules	Year 2: Mandatory Modules
<ul style="list-style-type: none"><li>Advanced Therapeutic Child And Social Care 1: The theories and theorists that inform therapeutic practice</li></ul>	<ul style="list-style-type: none"><li>Advanced Therapeutic Child and Social Care 2: Applying the theories to practice</li></ul>
<ul style="list-style-type: none"><li>Philosophy and Ethics of Leadership in Therapeutic Child and Social Care</li></ul>	<ul style="list-style-type: none"><li>Research Methods and Dissertation</li></ul>
<ul style="list-style-type: none"><li>Observing and Understanding Organisational Life</li></ul>	<ul style="list-style-type: none"><li>Leadership and Management Issues in Therapeutic Child and Social Care</li></ul>
<ul style="list-style-type: none"><li>Experiential Group 1: Leading Self</li></ul>	<ul style="list-style-type: none"><li>Experiential Group 2: Leading Self and Others</li></ul>

## Entry Requirements & Selection Criteria:

Eligibility for this course includes:

1. Hold a primary degree (Honours Bachelor) in Applied Social Studies or equivalent\*;

2. Be registered or eligible to register as a professional Social Care Worker\*\*;

3. Be in employment in a human services agency as a manager, team leader or front-line practitioner;

4. Satisfactory pass at interview.

Application forms can be downloaded from the Carlow College website at: [www.carlowcollege.ie](http://www.carlowcollege.ie)

\*Applicants who do not satisfy the academic criteria may be accepted onto the course if the Course Selection Board is satisfied that they have the ability to complete the course and are well placed to make good use of it.

\*\*Applications are welcome from those professionally qualified in a discipline other than social care who have at least two years' professional practice experience. Please note, that this programme is not a professional award for registration as a Social Care Worker.



## Work Placement

### Residential Community Experience

During the course students have the opportunity to experience living together as a community. This experience deepens the learning process and has been a huge contribution to the success of the students on the course.

### Visit of Observation

The Visit of Observation provides a unique opportunity for students to be a participant observer for 5 days at a work setting of their choice. Students get the opportunity to see and experience how a world-class therapeutic community works and operates. Students' choice may be informed by their professional interest or the focus of their dissertation. The Visit is undertaken during the summer break and is a bridge between Year 1 and Year 2.

## Career Prospects

This unique postgraduate course began in 2004 in order to bring about significant positive changes in Social Care practice. A recent survey of our graduates revealed that the majority of them were working in key positions to drive change and influence this practice. They were Directors of Service, Managers, Team Leaders, Consultants to Staff Teams, Therapists, and Social Care Lecturers.

## Enquiries

**Damien McLellan,**  
Course Leader

Phone: 087 2836923  
Email: dmclellan@carlowcollege.ie

**Karen Delaney,**  
Admissions Officer

Phone: 059-9153243  
Email: admissionscc@carlowcollege.ie

## Further Study

Graduates may choose to advance to further study in areas of psychotherapy and research or to continue their studies to PhD level.

## Continuous Professional Development (CPD)

There are opportunities to engage in bespoke CPD courses which have evolved from this M.A. programme. For example, a Certificate in Therapeutic Foster Care Course is run in partnership with TUSLA. For more information and to discuss your training needs, contact Damien McLellan, Course Leader.



## Graduate Profiles

Laura Cox

Deputy Manager in a Social Care Setting

“Deciding to undertake a Master’s programme at any time of your life is tough and daunting. My decision to undertake the Masters at Carlow College was no exception. However, a quick reflection on my present position justifies it as one of the best decisions I have made to date. The knowledge I have gained on this course has enabled me to apply practical, hands-on experience on a daily basis in my work as a Deputy Manager in a Social Care Setting. I couldn’t recommend the course enough to anyone who works with children or adolescents.”



Lynda Tobin

Social Care Work, NUA Healthcare

“What I love most about this unique Masters programme is that it is receptive of both my academic and working life experience and incorporates it into the progression of my professional development as a Social Care Worker with Nua Healthcare. I find the ‘Matching Principle’ model a most necessary and central aspect to how I practice as a Social Care Worker in terms of the often complex situations I find myself working in. The ability to work reflectively means that the people I encounter on a daily basis will meet a professional that responds rather than reacts to the dilemmas of their lives.”





# M.A. IN IRISH REGIONAL HISTORY

## Course Level

9

## Duration

2  
YEARS  
PART-TIME

## Minimum Intake

8

## Cost

€2,250  
PER ANNUM

## Course Outline

The M.A. in Irish Regional History offers both a challenging and rewarding introduction into the advanced study of history by combining a range of taught modules with opportunities for independent research. The programme is structured to develop a conceptual, methodological and practice-based understanding of history. The aim is to expand intellectual experience by encouraging new evidential research and challenging existing interpretations of historical narratives. The programme will build on students' historical expertise and further develop their professional competencies. Students have the opportunity to carry out research and study in the fields of regional history and cultural heritage that will have a focus on the south-east, but will allow research proposals and projects that relate to other Irish regions.

The M.A. in Irish Regional History is distinctive in offering this regional, cultural and oral history aspect of its programme. Learning regional or local history

can motivate learning about how the grand scheme of historical change has been made up of countless individuals and often ordinary people that contributed to a specific region. This M.A. programme aims to produce historians who will find, preserve and communicate this history within the academy and public arenas, and gain employment in the fields of heritage, tourism, media and education.\*



Only programme of this kind on the east coast of Ireland.



Core research skills will be developed culminating in an independent research thesis.



Focus is on 'doing' regional history, learning and debating cultural heritage, and practicing oral history.



Rich local archives for research students to utilise such as the Delany Archive, Keffe Library, Thomas Wall Collection.



Unique practical programme with a wide subject range that teaches and facilitates not only skills acquisition, but the application of these skills to major historical themes.

# What will I study?

## Course Content

Semester 1	Semester 2	Semester 3	Semester 4
<ul style="list-style-type: none"><li>• Exploring Historiography and Research Methods</li><li>• Discourse and Dissonance: Themes in Regional History</li></ul>	<ul style="list-style-type: none"><li>• Historical Research, Design and Practice</li><li>• Stories from the Archives: Doing Irish Regional History</li><li>• Cultural Heritage</li><li>• Revealing Hidden Voices: Oral History</li></ul>	<ul style="list-style-type: none"><li>• Emerging Histories: Research Seminars</li></ul>	<ul style="list-style-type: none"><li>• Thesis</li></ul>

Each semester is 20 weeks, with two evenings per week from 6.30pm to 9.30pm for 12 weeks of lectures/seminars running from September to December and January to May, aside from the thesis which will encompass 32 weeks of mainly independent study/research.

## Entry Requirements & Selection Criteria:

The minimum requirements for application for entry to this programme are:

1.

A degree at level 8 on the National Framework of Qualifications (NFQ with an award at a minimum of second-class honours grade 2 or its equivalent under the European Framework of Qualifications or other international educational qualification recognition system); or
2.

Applicants who hold a degree at level 8 with an award of pass or who hold a degree at level 7 or their respective equivalents on the NFQ and the EFQ may be considered for entry to the programme if they can show evidence of relevant career practice for a minimum period of three years or who can evidence a portfolio of publication in historical or cognate studies; or
3.

In exceptional circumstances, applicants who do not hold a degree at level 7 or level 8 on the NFQ may be considered for entry subject to evidence of relevant career practice for a minimum period of 8 years or who can evidence a relatively substantial portfolio of publication in historical or cognate studies.

Applicants whose first language is not English must be able to provide evidence that their spoken and written level of English is adequate for successful participation in the programme.



## Application Process

Individuals wishing to be considered for entry to this programme apply directly to Carlow College. Application forms can be downloaded from the Carlow College website at: [www.carlowcollege.ie](http://www.carlowcollege.ie)

## Career Prospects

The M.A. in Irish Regional History aims to provide graduates with the skills and expertise to pursue a range of professional pathways, for example: heritage agencies and centres, County Council Heritage Officers, conservation and restoration, museums, national parks, tourism, charities and NGOs, research positions in government agencies and media companies, and arts administration. It will also be attractive to those who already work in the wider heritage sector and wish to upskill for professional development.

Employability is not the only reason to acquire a postgraduate degree. Students also enjoy the chance to pursue their undergraduate subject or

field of interest at a more advanced level. An M.A. can allow learners to follow a subject that they have passion for where the end goal is education and knowledge.

## Enquiries

**Dr Elaine Callinan**

**Lecturer in Modern Irish History**

Phone: 059-9153200

Email: [ecallinan@carlowcollege.ie](mailto:ecallinan@carlowcollege.ie)

**Karen Delaney,**

**Admissions Officer**

Phone: 059-9153243

Email: [admissionscc@carlowcollege.ie](mailto:admissionscc@carlowcollege.ie)

## Further Study

This programme encourages lifelong learning and is useful for progression to undertaking further study at level 9 or graduates may choose to advance to PhD level in similar fields of study.



THE IRISH INDEPENDENT, FRIDAY, MAY 5, 1916.  
**REBEL LEADERS SHOT**  
OFFICIAL REBEL LEADERS SHOT.

**NEW BATCH OF INCIDENTS**

MORE PRISONERS  
TAKEN

STRIKING EPISODE  
THE RISING

DOOMED LEADER'S  
WEDDING

A PATHETIC INCIDENT

CITY GETTING NORMAL  
OF THE WAR

## THE MOBILISATION

ROLAND'S MILL  
—  
THE EXPLORED

1000

## AGENTS TAKE T

...KILLED

...the ...  
...the ...  
...the ...

# POSTGRADUATE DIPLOMA IN IRISH REGIONAL HISTORY

## Course Level

9

## Duration

18  
MONTHS  
PART-TIME

## Minimum Intake

8

## Cost

€2,250  
PER ANNUM

## Course Outline

The Postgraduate Diploma in Irish Regional History offers both a challenging and rewarding introduction into the advanced study of history by combining a range of taught modules as well as opportunities for independent research. Regional history promotes comparative analysis between counties in different areas rather than honing in solely on the history of a particular event at a very local level. Students on the Postgraduate Diploma in Irish Regional History will take all the modules of the M.A. in Irish Regional History for semester 1, semester 2 and the Debating History module from semester 3. The programme is structured in a way that develops a conceptual, methodological and practice-based understanding of history.

In this programme there is a strong emphasis on thematic and creative modules to encourage students to sharpen the broad themes of history into the regional in modules such as 'Discourse and Dissonance: Themes in Regional History', 'Stories from the Archives: Doing Regional History' and 'Cultural Heritage'. The Oral History module 'Revealing Hidden Voices' is unique to this programme. This programme aims to produce historians who will find, preserve and communicate this history within the academy and public arenas, and gain employment in the fields of heritage, tourism, media and education.\*



Only programme of this kind on the east coast of Ireland.



Focus on 'doing' Irish regional history and heritage and the final capstone project can be less daunting than a full thesis.



Study of Oral History is unique to these degrees, and can help to solidify the accuracy of historical happening.



Opportunity at the end of semester two to progress to the M.A. in Irish Regional History

# What will I study?

## Course Content

Semester 1	Semester 2	Semester 3
<ul style="list-style-type: none"><li>• Exploring Historiography and Research Methods</li><li>• Discourse and Dissonance: Themes in Regional History</li></ul>	<ul style="list-style-type: none"><li>• Historical Research, Design and Practice</li><li>• Stories from the Archives: Doing Irish Regional History</li><li>• Cultural Heritage</li><li>• Revealing Hidden Voices: Oral History</li></ul>	<ul style="list-style-type: none"><li>• Emerging Histories: Research Seminars</li><li>• Irish Regional History Project</li></ul>

Each semester is 20 weeks, with two evenings per week from 6.30pm to 9.30pm for 12 weeks of lectures/seminars running from September to December and January to May.

## Entry Requirements & Selection Criteria:

The minimum requirements for application for entry to this programme are:

1. A degree at level 8 on the National Framework of Qualifications (NFQ with an award at a minimum of second-class honours grade 2 or its equivalent under the European Framework of Qualifications or other international educational qualification recognition system); or

2. Applicants who hold a degree at level 8 with an award of pass or who hold a degree at level 7 or their respective equivalents on the NFQ and the EFQ may be considered for entry to the programme if they can show evidence of relevant career practice for a minimum period of three years or who can evidence a portfolio of publication in historical or cognate studies; or

3. In exceptional circumstances, applicants who do not hold a degree at level 7 or level 8 on the NFQ may be considered for entry subject to evidence of relevant career practice for a minimum period of 8 years or who can evidence a relatively substantial portfolio of publication in historical or cognate studies.

Applicants whose first language is not English must be able to provide evidence that their spoken and written level of English is adequate for successful participation in the programme.



## Application Process

Individuals wishing to be considered for entry to this programme apply directly to Carlow College, St. Patrick's. Application form can be downloaded from the Carlow College website at: [www.carlowcollege.ie](http://www.carlowcollege.ie).

## Career Prospects

The Postgraduate Diploma in Irish Regional History aims to provide graduates with the skills and expertise to pursue a range of professional pathways, for example: heritage agencies and centres, County Council Heritage Officers, conservation and restoration, museums, national parks, tourism, charities and NGOs, research positions in government agencies and media companies, and arts administration. It will also be attractive to those who already work in the wider heritage sector and wish to upskill for professional development.

Employability is not the only reason to pursue a postgraduate degree. Students also enjoy the chance to pursue their undergraduate subject or field of interest at a more advanced level. A postgraduate diploma can allow students to follow a subject that they have passion for where the end goal is education and knowledge, and this can also enhance job prospects.

## Enquiries

**Dr Elaine Callinan**

**Lecturer in Modern Irish History**

Phone: 059-9153200

Email: [ecallinan@carlowcollege.ie](mailto:ecallinan@carlowcollege.ie)

**Karen Delaney,**  
**Admissions Officer**

Phone: 059-9153243

Email: [admissionscc@carlowcollege.ie](mailto:admissionscc@carlowcollege.ie)

## Further Study

This programme encourages lifelong learning and is useful for progression to undertaking an M.A. programme. Students have the opportunity to progress to the M.A. in Irish History on successful completion of semester one and two of the Postgraduate Diploma in Irish History.



# GRADUATE SKILLS & EMPLOYABILITY

## Graduate Attributes

Carlow College, St. Patrick's is committed to ensuring that all students start their careers with the expertise, social outlook, and principles that will allow them to advance effectively in their chosen careers, to grow as socially responsible people, while retaining a passion for lifelong learning. Our mission is to nurture graduates who will become future influencers and leaders in society in the fields of arts, humanities, and the applied social sciences. We are committed to embedding and developing key skills in all the activities of the College and reflecting them in the design, delivery and assessment of all our academic degrees. Our aim is that graduates of Carlow College, St Patrick's will be:

- Academically Excellent
- Problem Solvers
- Effective Communicators
- Collaborative in Approach
- Lifelong Learners
- Socially Engaged
- Work and Employment Ready

## Career Skills & Placements

The degree programmes offered at Carlow College, St. Patrick's provide students with key skills and real-life work experience through a wide selection of diverse placement and skills modules. These modules provide students with an opportunity to gain practice in a broad range of professions. Graduates can then apply these skills and gain employment across many industry sectors. The exposure to such practice and skills also provides a foundation for graduates to explore further educational opportunities.

### Career Practice

This module is offered within the English & History degree and aims to enhance students' employability and skills through real-life work experience.

### Academic and Digital Skills

This module is offered across all degree programmes. Students develop the key academic and digital skills needed for each degree programme from exploring effective learning strategies to improving use of the library catalogue and digital resources.

### Career Skills

This workshop-based module is offered within the English & History degree. Students are given the opportunity to develop skills, knowledge and competencies relevant to their employability as graduates of the degree. These skills include: media and communication skills, leadership skills, team-working skills, problem-solving skills and IT skills.

### Catechetics and Teaching Placement

This module is offered within the Arts & Humanities degree and provides supportive and supervised teaching placement at both Primary and Post-Primary levels.

### Practice Placement

Students on the Applied Social Studies (Professional Social Care) degree have two mandatory 13-week placements in Years' 2 and 3. The theory learned in the classroom is applied in the work setting and the students benefit from the expertise of professionals who demonstrate the necessary skills and techniques used by Social Care Practitioners.

## Professional Development and Employability Skills

This module is offered in the Applied Social Studies (Professional Social Care) degree. Students engage in a process of reflective learning and skills development which will enable them to make, and follow through on, well informed professional career choices.

## Community Arts: Theory and Practice

This module is offered within the Social, Political & Community Studies degree. Students apply the theory gained in semester one and put it into practice through placements and projects with community groups in semester two. Previous projects have included: a community garden: An Gairdin Beo and a Women's Day Conference.

## Internship Programme

This module is offered as part of the Social, Political & Community Studies degree. Students develop their professional practice through placement in a community or sector which is dedicated to furthering a particular social cause or advocating for a shared point of view.

## Graduate Employability

Graduates from Carlow College, St. Patrick's have successfully engaged with a broad range of professional employment opportunities and skills. Recent graduates have gained employment in the following organisations:



Bank of Ireland



Google™



Emirates

Focus Ireland



HE  
Feidhmeannacht na Seirbhíse Sláinte  
Health Service Executive

Positive Care

RTE

Seanad Éireann

sky



TÚSLA  
An Ghníomhaireacht um Leanaí agus an Teaghlach  
Child and Family Agency

UCC  
University College Cork, Ireland  
Coláiste na hOifigeoire Gaeilge

University of Kent

ZURICH



# ADMISSIONS

## *Thinking about Applying?*

If you're a Leaving Certificate Student, Mature Applicant, QQI-FET Applicant or Non-Standard Applicant and thinking of applying to Carlow College, St. Patrick's, the Admissions team are here to help.

For advice on CAO applications, Fees, Grants, Scholarships, Mature interviews, or any other admission or application query, please feel free to get in touch.

## *The Admissions Office Team:*

### **Karen Delaney**

Admissions Officer

[admissionscc@carlowcollege.ie](mailto:admissionscc@carlowcollege.ie)

+353 59 9153243

### **Sabrina Hurley**

Assistant Admissions Officer

[admissionscc@carlowcollege.ie](mailto:admissionscc@carlowcollege.ie)

+353 59 9153268



# ADMISSIONS & ENTRY REQUIREMENTS

Applications for admissions to all full-time undergraduate degree programmes must be made through the Central Admissions Office (CAO). Please take care in choosing courses in genuine order of preference when you are completing your application

form. This applies to all categories of applicants. Applications can be made online at: [www.cao.ie](http://www.cao.ie) or alternatively by contacting the CAO office to request an application form.

**Find out more**  
Central Admissions Office  
Tower House  
Eglinton Street  
Galway  
T +353 91 509 800

## Important Dates for CAO Applications 2020/21

November	<ul style="list-style-type: none"><li>• CAO online application facility opens on the 4th of November at 12.00 noon</li></ul>
January	<ul style="list-style-type: none"><li>• Discounted application fee (€30) available up to 20th January at 5.15pm</li><li>• Online Change</li></ul>
February	<ul style="list-style-type: none"><li>• Normal closing date for applications (€45) is 1st of February at 5.15pm</li><li>• Online facility to amend course choices becomes available (€10) on 6th February at 12.00 noon</li></ul>
March	<ul style="list-style-type: none"><li>• Closing date for amended course choices is 1st March at 5.15pm</li><li>• Late application (€60) facility opens on 6th March at 12.00 noon</li></ul>
May	<ul style="list-style-type: none"><li>• Closing date for late applications is 1st May at 5.15pm</li></ul>
July	<ul style="list-style-type: none"><li>• Change of Mind closes on 1st July at 5.15pm</li><li>• Round A offers for certain categories of applicants e.g. mature, deferral etc. are issued in early July</li></ul>
August	<ul style="list-style-type: none"><li>• Round O offers are issued for certain non-standard categories of applicants in early August</li><li>• Round One offers issues on 19th August (expected date)</li><li>• Round Two offers issued</li></ul>



## CAO Course Codes

Programme	Code
B.A. (Honours) in English & History	PC 411
B.A. (Honours) in Arts & Humanities	PC 410
B.A. (Honours) in Social, Political & Community Studies	PC 405
B.A. in Applied Social Studies (Professional Social Care)	PC 404
B.A. in Arts & Humanities	PC 402

# LEAVING CERTIFICATE APPLICANTS

## Entry Requirements

Admission is based on the Leaving Certificate points system, however the following entry requirements must be met in order to gain entry to full-time degree courses:

Programme	Minimum Entry Requirements
B.A. (Honours) in English & History	Two H5 and four H7/O6
B.A. (Honours) in Arts & Humanities	Two H5 and four H7/O6
B.A. (Honours) in Social Political & Community Studies	Two H5 and four H7/O6
B.A. in Applied Social Studies (Professional Social Care)	Five H7/O6
B.A. in Arts & Humanities	Five H7/O6
Mathematics is not a requirement for any degree course.	
English, or another language satisfies the language requirement for all degree courses.	

## Common Points Scale

Higher Level Grade	Points	Ordinary Level Grade	Points
H1	100		
H2	88		
H3	77		
H4	66		
H5	56	O1	56
H6	46	O2	46

Higher Level Grade	Points	Ordinary Level Grade	Points
H7	37	O3	37
H8	0	O4	28
		O5	20
		O6	12
		O7	0
		O8	0



## Leaving Certificate Vocational Programme (L.C.V.P Link Modules)

Carlow College , St. Patrick's awards points for results in Leaving Certificate Vocational Programme Link Modules in place of a Leaving Certificate subject as follows:

LCVP Grade	Points Awarded
Distinction	66
Merit	46
Pass	28

## Leaving Certificate Applied

The Leaving Certificate Applied does not meet the minimum entry requirements for programmes at Carlow College, St. Patrick's. Holders of the LCA may gain entry through QQI-FET level 5/6 award schemes.

# QQI-FET APPLICANTS

Carlow College, St. Patrick's has a long standing tradition of serving QQI-FET students. Students with the relevant and appropriate QQI-FET Level 5/6 awards, may be admitted on a competitive basis to Carlow College, St. Patrick's degree programmes.

Students are offered the quota of places reserved for QQI-FET applicants. Places will be allocated based on the applicant's score only. The best 8 modules in a single award will be used for the calculation of points. Where more than one applicant has the same score, applicants will be ranked by the CAO on a random basis. For all courses, the required modules can be completed over multiple sittings leading to an appropriate award.

For further information on all QQI-FET applications/entry requirements, please contact the Admissions Office at: [admissionscc@carlowcollege.ie](mailto:admissionscc@carlowcollege.ie)

## Progression Agreements

Carlow College, St. Patrick's has put in place Progression Agreements to offer progressive pathways to students who successfully complete a linked FET programme in partner Colleges of Further Education. These successful applicants may be offered a place in Round Zero of the CAO system, which covers entry to the first year of the degree programme at Carlow College.

The aim of the Progression Agreements scheme is to ensure equality of opportunity for, and the smooth transition of learners moving from further to higher education. The agreements recognise the range of generic and discipline specific skills and knowledge acquired by successful students on further education programmes and matches these to the requirements of our degree programmes.

## Relevant QQI-FET Awards for entry to our Degree Programmes include:

Course	Relevant QQI-FET Programmes (Level 5/6)
PC402	Any full Major QQI-FET
PC410	Any full Major QQI-FET
PC411	Any full Major QQI-FET
PC 404	5M2181: Applied Social Studies 5M2786: Community Care 5M4468: Health Service Skills 5M4732: Youth Work 5M2009: Early Childhood Care and Education
PC405	5M2181: Applied Social Studies 5M2786: Community Care 5M4468: Community and Health Services 5M378: Health Service Skills 5M4732: Youth Work 5M3050: Community Development 5M5048: Creative Media 5M2154: Cultural and Heritage Studies 5M3635: Education and Training 5M2073: Language and European Studies 5M3114: Liberal Arts 5M3114: General Learning 5M2464: Journalism

Please note that some QQI-FET Level 6 awards may be considered for Advanced Entry.

Contact the Admissions Office at: [admissionscc@carlowcollege.ie](mailto:admissionscc@carlowcollege.ie) for further information.

## ADVANCED ENTRY APPLICANTS

Our Advanced Entry process allows applicants to apply for entry to full time courses at a year other than first year. This process provides direct entry to the College and is not processed through the CAO. All Advanced Entry applications are considered by the College on a case by case basis.

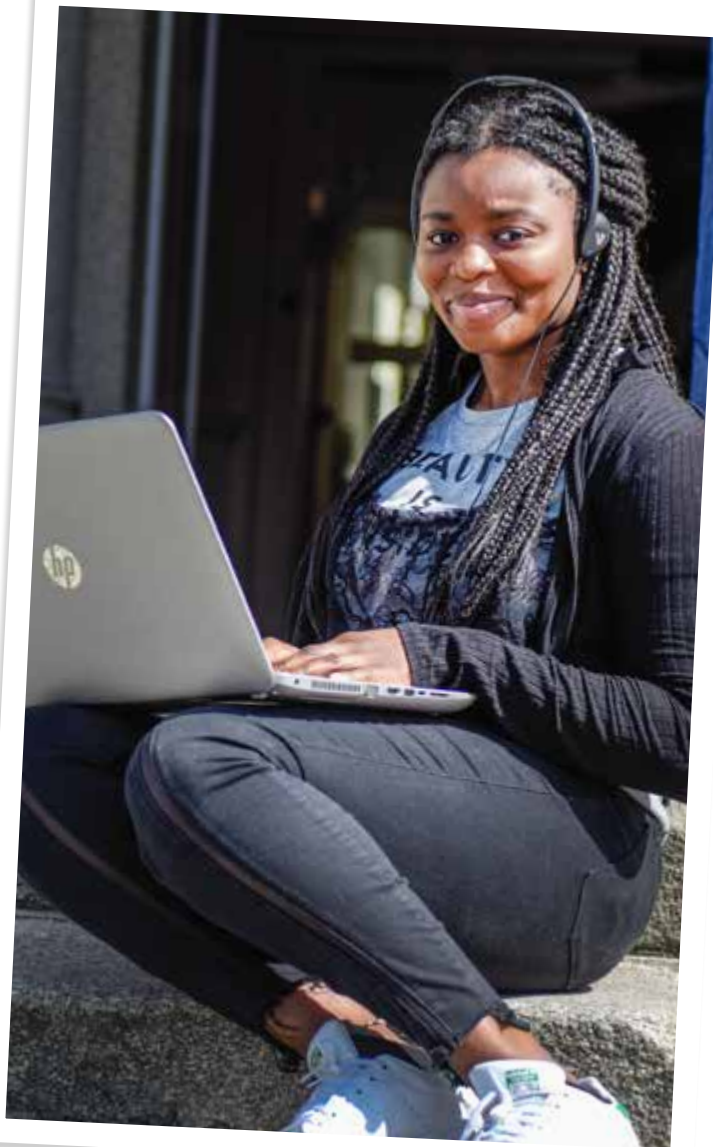
QQI-FET applicants (or equivalent) who already hold a third-level educational qualification or who have successfully completed part of a programme at recognised Higher Education Institution may apply for entry onto the second or subsequent years of the following undergraduate programmes:

- B.A. in Arts & Humanities
- B.A. (Hons) in Arts & Humanities
- B.A. (Hons) in English & History
- B.A. (Hons) in Social, Political & Community Studies
- B.A. (Hons) in Applied Social Studies (Professional Social Care)

This applies where an applicant has gained a full Level 6 award (120 credits) in a programme directly relevant to the Carlow College programme they wish to apply for. Such applicants may transfer into the second, third or in some cases, the fourth year of a degree programme where it can be shown appropriate learning outcomes have already been achieved by the applicant.

Application forms and other details may be found on our website at: <https://www.carlowcollege.ie/study-with-us/prospective-students/advanced-entry-students/>

For further information in relation to Advanced Entry please contact the Admissions Office at:  
[admissionscc@carlowcollege.ie](mailto:admissionscc@carlowcollege.ie)



# MATURE APPLICATION

Applicants must be aged 23 years or older on or before the 1st of January of the year of entry to a full-time undergraduate degree programme to apply as a Mature Applicant.

Mature Applicants must apply through the Central Applications Office (CAO) before the 1st of February for all full-time undergraduate programmes. Carlow College, St. Patrick's also accepts late applications through the CAO (up until 1st of May).

It is important to complete the CAO application form thoroughly and you must tick the Mature Applicant box on the application form in order to be considered as a Mature Applicant. Applicants must complete the CAO application, including sections 1 – 11 of the Mature Applicant Section. Please ensure that you place course choices in genuine order of preference.



*The CAO provides a comprehensive handbook, which includes information specific to mature students.  
[www.cao.ie/downloads/documents/MatureStudentGuide](http://www.cao.ie/downloads/documents/MatureStudentGuide)*

## What next...

Once you have applied through the CAO, a file will be sent by CAO to Carlow College, St. Patrick's indicating that you have applied as a Mature Applicant. The Admissions Office will then send formal correspondence to all Mature Applicants. This correspondence will include an invitation to attend an assessment day and a more detailed application form (specific to programmes at Carlow College, St. Patrick's). There are two scheduled interview sessions, one after the 1 February deadline (normally early March) and the other after the 1 May deadline (normally end of May).

The assessment day include:

Meet the team
Written Assessment
Interview
Questions and Answer Session
Tour of the College

Your application form and participation in the assessment day will be assessed. It is at the discretion of the College whether you are recommended to CAO to receive an offer. If you are successful, you will receive an offer from Carlow College, St. Patrick's through the CAO in early July.

Carlow College, St. Patrick's does **NOT** have a limit on the number of places offered to mature students. This applies to all courses at Carlow College, St. Patrick's.

# NON-STANDARD APPLICANTS



Further details on Non-Standard Applicants may be found on our website at:  
<https://www.carlowcollege.ie/study-with-us/prospective-students/non-standard-students/>

Carlow College, St. Patrick’s welcomes Applications from Non-Standard or Special Category Applicants who wish to be considered for entry to any of the College’s Degree programmes. Applicants who are not of mature years but who wish to have taken into account qualifications and/or achievements additional to, or alternative to, the Leaving Certificate may apply as a Non-Standard or Special Category Applicants through the CAO. Such qualifications may have been gained from other full or part-time study.

There are six categories, which are detailed on Page 3 of the CAO Application Form. Applicants who wish to be considered as a Non-Standard Applicant should tick the relevant box on Page 3 of the CAO form.

Applicants may be invited for interview for some programmes. Non-Standard Applicants are of course entitled to be assessed on the same basis as any other applicant on the basis of points achieved. This means that Non-Standard Applicants will be credited with the Leaving Certificate points that they may have obtained.

For further information please contact the Admissions Office at: [admissionscc@carlowcollege.ie](mailto:admissionscc@carlowcollege.ie)

Types of Non-Standard applicants include:
International Students
GCW/GCSE
Other School Leaving Exams
NCVA Level 2/3 (pre-2002)
Further Education (other than FETAC Level 5/6 and NCVA Level 2/3)
Disability/Specific Learning

# ADDITIONAL APPLICANT INFORMATION

## Garda Vetting

Carlow College, St. Patrick's offers a number of programmes that require students to undertake placements with external agencies. In such placements, students will assume positions of trust and be in contact with the public. To ensure the protection of the public, and justify public trust and confidence, the College is committed to ensuring that students undergo Garda Vetting.

Programmes for which Garda Vetting is required are:

- B.A. in Applied Social Studies (Professional Social Care)
- B.A. (Hons) in Applied Social Studies (Professional Social Care)
- B.A. (Hons) in Social, Political & Community Studies
- B.A. in Arts & Humanities (if enrolled in the Catechetics & Teaching Placement Module)
- B.A. (Hons) in Arts & Humanities (if enrolled in the Catechetics & Teaching Placement Module)
- B.A. (Hons) in English & History (if enrolled in the Career Practice Module).

Carlow College, St. Patrick's uses the Garda Síochána National Vetting Bureau (GSNVB) which, where applicable, may liaise with the Police Service of Northern Ireland Vetting Service to assess the suitability of applicants for admission to such programmes. Garda Vetting includes Police Vetting in respect of other jurisdictions.

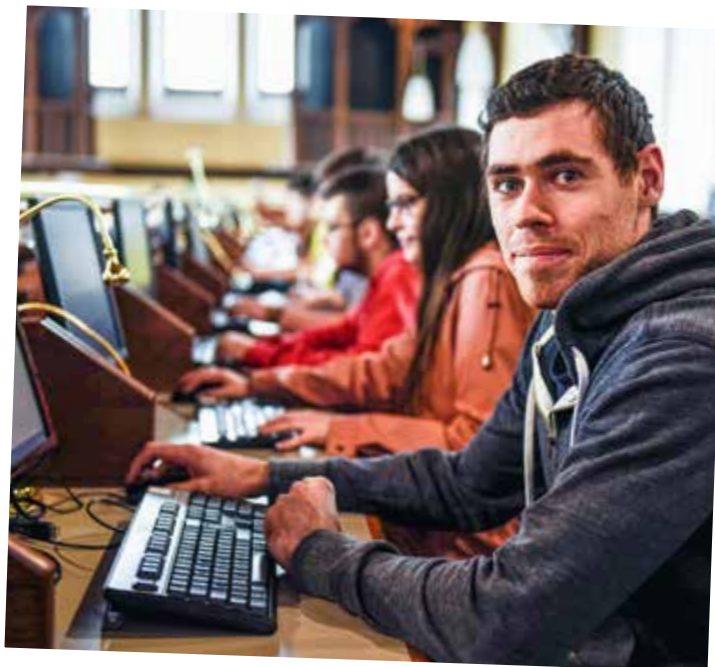
## Quality Assurance

All applicants and continuing students should be familiar with College policies and regulations in relation to the:

- Quality Assurance Policy
- Fitness to Continue in Study Policy
- Fitness to Practice Policy
- Breach of Professional Conduct (Professional Social Care) Policy
- Learner Admission, Progression and Recognition Policy

The above and other College policies that relate to students at Carlow College, St. Patrick's can be found on our website at:

[www.carlowcollege.ie/policies-a-z/](http://www.carlowcollege.ie/policies-a-z/)



# ENGLISH LANGUAGE REQUIREMENTS

Students whose first language is English must have an Irish Leaving Certificate (or equivalent) with a Grade O6 or better in Ordinary Level English. Students whose first language is not English must be able to provide evidence that their spoken and written level of English is adequate for the programme for which they have applied. The relevant certified documentation to support this shall be provided as part of the application process:

- 1. An approved English language qualification or test result (see below for list of approved qualifications and test results). The qualification or test result shall have been awarded no more than two years prior to the proposed date of enrolment;
- AND/OR
- 2. Satisfactory completion of an interview process for entry onto the programme.

English Proficiency Qualification	Minimum Achievement Level Required for Level 6-9 Entry
Irish Leaving Certificate	Grade O6 or better in Ordinary Level English
High School Diploma (United States)	Grade C or better in English (senior year results)
GCSE	Grade C or better in English
TOEFL Paper Based Test	570
TOEFL Computer Based Test	233
TOEFL Internet Based Test	90
IELTS (Academic Session)	6.51
Pearson Test of English (PTE Academic)	632
Cambridge Certificate of Proficiency in English	Grade C (CEFR Level C1 or C2)
Cambridge Certificate in Advanced English	Grade C (CEFR Level C1 or C2)
English Test for Academic and Professional Purposes (ETAPP)	Grade C1 or better (CEFR Level C1 or C2)
1. With no less than 6.0 in any one component of the exam. 2. With a minimum of 59 in all components.	

**Note 1:** In certain circumstances results in examinations other than those outlined above may be accepted as proof of competence in the English language. However, the results obtained in such other examinations must indicate competency to one of the standards outlined above. Applicants should check with the International Office for more details.

**Note 2:** Please also note that IN ALL CASES the English language certification must have been obtained within TWO YEARS prior to the application to Carlow College, St. Patrick's.

**Note 3:** Visa-required nationals should note that to comply with current immigration procedures, results of recent IELTS or TOEFL exams must accompany visa applications; please see <http://www.inis.gov.ie/en/INIS/Pages/Study> for visa requirements

# GRANTS, FEES AND SCHOLARSHIPS



# FEES

## Undergraduate fees consist of two elements:

### 1. Student Contribution Fee

All students registering for full-time undergraduate degree programmes are required to pay the Student Contribution Fee, commonly known as the Registration Fee. This fee is currently €3,000. However, students who have applied and are successful in their application for a grant (SUSI) or scholarship will have this student contribution fee paid on their behalf by the scholarship provider or higher education grant authority.

### 2. Tuition Fee

All full-time undergraduate degree programmes are covered under the Department of Education and Skills Free Fee Initiative. The State pays the tuition fee for eligible full-time, non-repeat undergraduate EEA Students.

In order to avail of the Department of Education & Skills Free Fees Initiative, you must also meet ONE of the following criteria:

- Be a citizen of an EEA member state (see above) or Switzerland.
- Have official refugee status in Ireland.
- Be a family member of a refugee and have been granted permission to live in the State.
- Be a family member of an EU national and have permission to live in the State, with a stamp '4EUFAM' on your residence card.
- Have been granted Humanitarian Leave to Remain in the State.
- Have been granted permission to remain in the State by the Minister for Justice and Equality

**You must also fulfill all of the following three course requirements:**

- You must be undertaking a full-time undergraduate course of at least two years duration.
- You must be a first-time full-time undergraduate or five years must have lapsed since you were last in college and you must not have completed a previous degree.
- In general, you must not be repeating the year because of failing your exams or changing course. This may be waived if you repeat a year due to serious certified illness. There are also some exceptions for students who are switching course.



# GRANTS

## Student Universal Support Ireland (SUSI)

SUSI is the single grant-awarding authority handling all applications for student grants. Applicants must make their grant application online at [www.susi.ie](http://www.susi.ie) Student grants are divided into maintenance grants, fee grants and the postgraduate contribution.

## Back to Education Allowance (BTEA)

BTEA is a scheme for unemployed people, lone parents and people with disabilities who are in receipt of payments from the Department of Social Protection. This allowance can be paid to people who wish to take up a third level course. Participants receive a standard rate of payment which is not means tested. The BTEA is not payable if the student is in receipt of either the Higher Education Grant (SUSI/Local Authority) or VEC scheme.

All enquiries for eligibility should be made to local Department of Social Protection Offices.



# UNDERGRADUATE SCHOLARSHIPS



At Carlow College, St. Patrick's, our philosophy places our students at the centre of everything we do. Our class sizes are small and inclusive, ensuring that students are known by name to their lecturers allowing them to receive the attention and support needed to excel during their time with us. Our scholarships are an extension of that support to our students while recognising their academic achievements.

## Academic Achievement Entrance Scholarship

Incoming students will be awarded an Academic Achievement Entrance Scholarship by gaining the highest CAO points through their Leaving Certificate examination. This scholarship will be awarded to the highest point earner on each undergraduate programme, with an award amount of €500 per student. In addition to the monetary award the students, along with their families and School Principles and Guidance Counsellors, will be invited to an awards ceremony where the School Principal will receive a plaque for their School marking this significant achievement.

## Mature Student Entrance Scholarship

Incoming mature students will be awarded a Mature Student Entrance Scholarship by gaining the highest grade point average (GPA) in semester one of their academic programme. This scholarship will be awarded to one successful applicant on each undergraduate programme, with an award amount of €500 per student. In addition to the monetary award the students, along with their families and former FET-QQI Principles and Guidance Counsellors (where applicable), will be invited to an awards ceremony where the former FET-QQI Principal will receive a plaque for the institution marking this significant achievement.

## Uversity Scholarship

Mature students applying to Carlow College, St. Patrick's can now apply for the Higher Education Scholarship for Adult Learners through Uversity. Uversity's Scholarships will provide financial support to individuals 23 years or older who wish to pursue a Bachelor's Degree programme. Aside from the direct costs of tuition, fees, books and IT, Uversity will also consider supporting day to day living costs such as childcare and transport which need to be taken care of to enable full-time education.

## Progression Scholarship

Upon completion of each year during Stages 1-3, the student who gains the highest grade point average (GPA) in each undergraduate academic programme will be awarded a Progression Scholarship. The amount awarded for each scholarship will be €500.



# GRADUATION AWARDS & PRIZES

EVERY YEAR AT GRADUATION CARLOW COLLEGE, ST. PATRICK'S RECOGNISES THE OUTSTANDING ACHIEVEMENTS OF OUR STUDENTS. THE FOLLOWING AWARDS AND PRIZES ARE PRESENTED:



## James Fintan Lalor Student of the Year Award

This award is named in honour of the social and agrarian radical, political theorist, and Young Irelander, James Fintan Lalor who was a student in the College in the 1820s.

This award is offered by the College and presented to a student who has achieved outstanding excellence in academic achievement, College participation and social engagement.



## Constance Markievicz Award

This award, offered by the College, commemorates Constance Markievicz who in 1918 became the first female M.P. elected to the UK House of Commons and later with other Sinn Féin TDs, formed the first Dáil Éireann and became the first female Minister for Labour. The award acknowledges academic excellence.



## Carlow County Council Bursary in Applied Social Studies and Social, Political & Community Studies

This award is offered by Carlow County Council to the highest achieving student on the Applied Social Studies (Professional Social Care) or Social, Political & Community Studies degree programme.



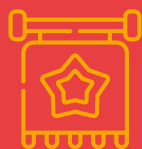
## Carlow County Council Bursary in Arts & Humanities and English & History

This award is offered by Carlow County Council for academic excellence to a student on the Arts & Humanities or English & History degree programme.



### Delany Archive Fr Thomas Mc Donnell Research in History Prize

This prize is offered annually by the Delany Archive Trust, in memory of Fr Mc Donnell. The prize is awarded to a student for the best final year History Dissertation that makes significant use of primary source material, accessed in archives or digital collections.



### Applied Social Studies Award for Excellence in Practice Placement

This award is offered by the College to a student on the Applied Social Studies (Professional Social Care) programme. It acknowledges student performance on Practice Placement. This award is presented to a student who has demonstrated excellent interpersonal skills, an ability to link theory to practice, and a creative and innovative intervention that made a positive impact during his or her Practice Placement.



### Dr Anne Holton Award in Teaching Excellence

This award named in honour of former lecturer Dr Anne Holton RSM. It is presented to the student who achieves the highest level of commendation during the teaching placement component of the Catechetics and Teaching Placement module which may be taken in the final year of the B.A. in Arts & Humanities programme.



### Robert Frederick Holmes (1803) Award

This award is named in honour of College student Robert Frederick Holmes who gave his life while attempting to save the life of a fellow student in 1803. It is presented by the College to a student in recognition of his or her outstanding contribution to the student body.

# PART-TIME STUDY

# PART-TIME STUDY

All Undergraduate Degrees at Carlow College, St. Patrick's are also offered on a part-time basis. Browse our Undergraduate degrees and find the right course for you.

As a part-time student, Carlow College, St. Patrick's can offer you a range of flexible study options to suit your individual needs.



## Part-Time Degree Study

Our part-time degree study option is available for students who wish to study on a part-time basis towards gaining a Level 7 or Level 8 degree. It is a flexible scheme that allows part-time students to study up to six subjects (modules) per year towards a full degree qualification in a chosen area of study. Part-time students can study up to a maximum of six modules or a minimum of one module per academic year. If a student wishes to complete Year 1 of the degree over a 2 year period, they must study 6 modules per year (3 modules in semester one and 3 modules in semester two).

Part-time study at Carlow College, St. Patrick's may also be used as a pathway to full time education. Once a part-time student has successfully completed stage one of a programme, they have the option to progress to Year 2 as a full time Undergraduate student or continue on as a part-time learner. As an Undergraduate full time student you may be eligible for funding by applying to Student Universal Support Ireland (SUSI).

For a list of modules across all years on each degree programme please see: [www.carlowcollege.ie](http://www.carlowcollege.ie)

## Career Development Study

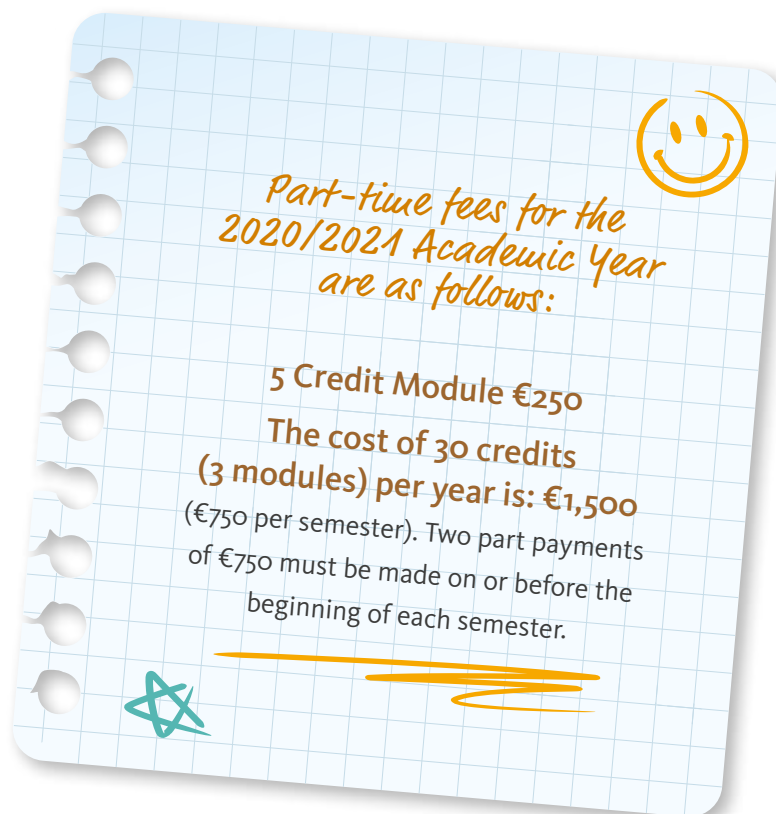
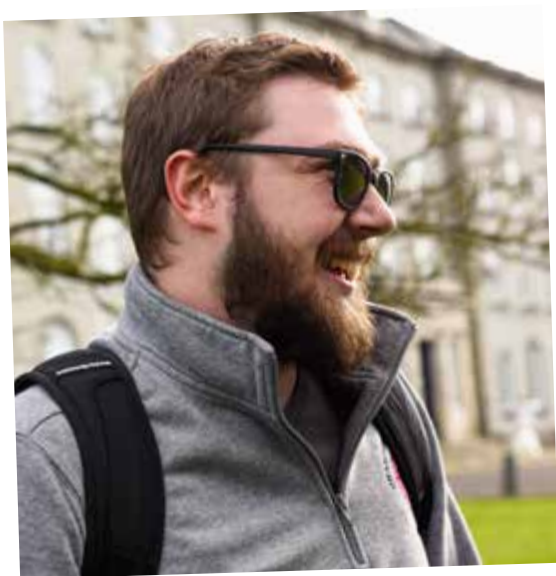
Carlow College, St. Patrick's offers stand-alone modules that can be completed within our current programme offerings. These modules can be completed to gain additional credits for a particular subject discipline and/or up-skill in a professional area. Under this type of study model, students can choose modules that will enhance existing qualifications to improve career prospects and employability.

As modules are taught in conjunction with the main degree, you will be attending lectures with full-time students when that subject is scheduled in the timetable.

## Personal Interest Study

Our personal interest study option is available for students who want to study modules simply for interest and personal enjoyment. We offer a wide choice of modules in a broad range of subjects across our Undergraduate Degree programmes. Part-time students can study up to a maximum of 6 modules or a minimum of 1 module per academic year.

As modules are taught in conjunction with the main degree, you will be attending lectures with full-time students when that subject is scheduled in the timetable.



Applications for part-time study are made directly to Carlow College, St. Patrick's and are not processed by the CAO.

Applications can be made through our website at:  
<https://www.carlowcollege.ie/study-with-us/prospective-students/part-time-students/>

# STUDENT SERVICES & LEARNER SUPPORTS

Carlow College, St. Patrick's prides itself on supporting students throughout their academic life. We endeavour to help our students to 'settle, stay and succeed' by providing a variety of support services, programmes and activities to enhance the student experience and to assist students in meeting the many demands of both their personal and academic lives.

# ACADEMIC RESOURCE OFFICE (ARO)

Academic Resource Office (ARO) provides a number of supports to assist students in the attainment of their academic goals. These include:



## Academic & Digital Skills Module

Worried about meeting College academic standards? Our Year 1 Academic & Digital Skills Module can help you develop the necessary academic and information literacy skills for completing assessments.



## Essay Doctor Service

Our friendly and accessible Essay Doctor Service supports our students with the preparation of assignments and the development of their academic writing skills.



## Academic Help Desk

Our 'drop-by' Academic Help Desk in the library can help with general academic queries.



## Learning Development Workshops & Classes

These workshops and classes run throughout the year and can help you to adapt to the demands of College and to plan and manage your studies.



## Assistive & Educational Technology

Need to update your IT and digital literacy skills? Our small student-led classes will enhance your technological capabilities. Find out how assistive features such as: text to speech, speech recognition, spellchecking, organisational apps and software are useful in college and life in general!



## Supports for Students with Disabilities / Learning Differences

A range of supports are available for students with a disability / learning difference. We can work with you to identify the most appropriate ones to ensure you can participate fully on your degree programme!



## Careers & Employability Service

From first days through to graduation, our Careers and Employability Service is here to help! We offer careers and employability support for students and recent graduates. We give professional advice and guidance on positioning yourself for the right job or further study options.

Services include:

Graduate employability and careers management skills

Graduate CV clinic and regular drop-in sessions

Graduate vacancy List

Work experience, internship and vacation opportunities

Postgraduate and job applications

Personal statements and career decision-making

Interview skills and practice

Psychometric test practice

## Chaplaincy

Our Chaplain recognises and responds to the pastoral and spiritual needs of our students and staff and provides a compassionate presence and a listening ear for the entire College community, irrespective of religious convictions or beliefs. An 'open-door' policy to the Chaplaincy service is maintained to enable students to feel welcome and to seek support, especially in times of distress, illness and bereavement.

The Chaplaincy space offers a peaceful environment for meditation or time away from the demands of college life.

## Counselling Services

Our free Counselling Service gives students access to professional and confidential supports to ensure their College experience is a happy and rewarding one.

Our full-time Counsellors support our students in dealing with any issues and challenges in their lives which may be impacting on their own happiness and wellbeing. This professional service is offered on a one-to-one basis in a safe and confidential setting. The Counselling Service also offers workshops throughout the year on a variety of topics including: adjusting to college life, stress management, mindfulness and mental health issues.

## Health Service

Our Health Service provides our students with access to the best support possible and immediate medical assistance when needed.

We provide a free, on-campus nursing service to all students which is supported by an off-campus, subsidised GP service. In addition to responding to immediate medical care needs, our nursing service provides professional advice and guidance on a range of issues:

Nutrition and dietary support
Flu vaccination
Hep B vaccination
Contraception
Sexual health
General well-being

The Health Service runs a number of campaigns and events throughout the year to raise awareness of health issues among the College community.



# STUDENTS' UNION

All registered Carlow College, St. Patrick's students are automatically members of the Students' Union (CCSU). CCSU ensures that the views of students are represented at all levels within the College, and at local and national platforms. We work collaboratively with various College functions to promote student engagement and to ensure you have a positive student experience throughout your studies. A few of the main events we

organise during the year are our Fresher's Week, RAG Week, Mystery Tours and our College Ball. We also co-ordinate and support a number of clubs and societies.

We are based in the Student Resource Building and our SU Officers can provide information and advice on all student-related issues – call in anytime for a chat or just to relax!



President  
*Brendan Mausfield*



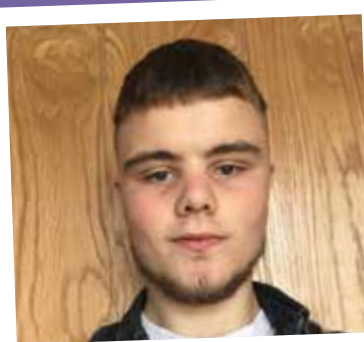
VP for Welfare and Equality  
*Eoin Byrne*



VP for Education and Communications  
*James Kearney*



Mature Students Officer  
*James 'Sunny' Kuott*



Clubs and Societies Officer  
*Brooklyn O'Keeffe*



Entertainments Officer  
*Jacky Casserly*

# CLUBS & SOCIETIES

Each year, Carlow College, St. Patrick's offers a number of student-led societies and clubs that cater for a wide variety of passions and interests. As an active member of one of our societies or social clubs, you can learn valuable leadership and team building abilities which will contribute to developing key skills that are much sought after by employers.

## Clubs, Societies & Events

In 2019, there were a number of activities, projects and events all held by our students such as Fresher's Week, International Women's Day event, RAG Week & the College Ball. There are also a number of Clubs & Socs on offer to our students, here are a few examples:



### Soccer Team

Join our soccer team and participate in competitive sports while improving your health and well-being. Students can engage in a range of sporting activities, which caters for all levels of participation.

### John O'Leary Book Readers' Club

Students spend a lot of their time with their heads stuck in books. This should be a pleasurable experience, but it can also be a daunting one! Help is at hand – the John O'Leary Book Readers' Club meets each week to read passages from a few novels, poems, plays or short-fiction in the hope of gaining enlightenment and a Zen-like mastery of important concepts... or not. Come along, no previous reading experience required!!



### NERD/Gaming Society

This Society run many tournaments throughout the year with all gaming needs catered for in the Student Resource Building. Students also attend various events throughout the year including Comic Con.



### Debating Society

Carlow College, St. Patrick's students participate in many debating events throughout the academic year including the annual Philosophy Colloquium with the Trinity College Philosophy Society, Metafizz.

### Student Choir

Our Student Choir provides an exciting opportunity to meet new people and get involved in the music scene in a relaxed and informal environment.

Students will have the chance to develop skills in sight reading, performance and vocal techniques, and play a key role in College and community events. We are looking for enthusiastic students who are passionate about singing and music and welcome singers at all levels of experience!



## STUDENT ENGAGEMENT & COMMUNITY OUTREACH

Our students organise, engage and participate in many community outreach programmes and student initiatives throughout the year such as:

### *Student Literary Awards*

The Carlow College, St. Patrick's Literary Awards brings together the entire College community to recognise and celebrate the very best of the College's literary talent. The Awards gather together the College literary community in a spirit of camaraderie and friendly competition to celebrate the best prose and poetry of the past year. The awards are held in the VISUAL Arts Centre and have previously been presented by Ireland Professor of Poetry, Eiléan Ní Chuilleanáin, novelist Ciaran Collins and poet Harry Clifton.

### *Fundraising Activities*

Our College has an active student body which engage in various fundraisers throughout the year in a bid to support local charities and students such as: Gala concerts, Students vs Staff Matches, Debates, and Fun Runs.

### *Foróige's Leadership for Life programme*

Students can engage in the Foróige's Leadership for Life programme, whereby our students are trained by Foróige experts to become facilitators who then facilitate activities with secondary school students. In this way our students help young people to develop the skills and qualities necessary to be effective leaders, as well as challenging them to use these skills for the betterment of society.

### *Writer-in-Residence / The Writing Room*

Join our dynamic and energising Writer-in-Residence each week in the Writing Room to discuss creative ideas and practice and to enhance your skills, confidence and experience in these areas. In conjunction with Carlow County Council's Arts Office, over the last four years, our writers-in-residence are novelist, spoken word performer and journalist Peter Murphy, Screenwriter, Oonagh Kearney; Playwright, Darren Donohue; Spoken Word Artist, Colm Keegan; Poet, Jessica Traynor; Memoir Writer, Arnold Thomas Fanning; Song Writers, Mick Hanly and Fiach Moriarty; and Screenwriter, Marc-Ivan O'Gorman.

## *Get Involved!*

*and become a...*

### Students' Union Officer

Elections for Students' Union Officers take place in the Spring.

### Class Rep

Be the vital link between the students and staff and represent students' views at Carlow College, St. Patrick's.

### Student Ambassador

Represent the College in a variety of activities and events throughout the year such as induction and orientation, open days and information events, campus tours and graduation events.

### Part of the Social Network

Our weekly ritual which invites all students to kick back, relax and have a chat with friends, new and old, over tea and home baking in the SU.

### Want to start your own Club or Society?

Contact: SU President:  
supres@carlowcollege.ie



## P.J. BROPHY & KEEFFE LIBRARY

Carlow College Libraries are central to learning here at Carlow College, St. Patrick's and provide a wide range of services and resources to support the learning, teaching and research activities of the College community. Our main Library, the P.J. Brophy Library, provides access to over 22, 000 print books and over 170,000 eBooks which can be accessed from the College or online. We also provide access to online journal articles, reports, official publications, theses, and newspapers which can be accessed either in the Library or through the Library catalogue. Beginning with welcoming tours during Registration & Induction Week, the Library staff are available to help you throughout your time at Carlow College. Library staff offer training on our resources throughout the year and are always available to provide you with the help you need to find, evaluate and manage information. The Academic Help Desk, a 'drop-by' service that offers assistance to students with general academic queries, is located on the first floor of the Library. As well as providing an Inter-Library loan service for items not available in our Library, we also have a bookshop where you can purchase texts for your modules. With individual and group study spaces, WiFi, printing and photocopying facilities, the library strives to provide each user with the best possible resources and environment for study and research.

The Keeffe Library served as the main College Library from 1820 to 1994 and now serves as our reference Library. It houses over 7,500 print books including early print material dating from the 1700's and hundreds of journals covering Irish History and other subjects. For more information on our Libraries, including more information on the Carlovian Bookshop, borrowing rights and opening hours, please visit our website at: <https://www.carlowcollege.ie/study-with-us/college-life/pj-brophy-library/>



## STUDY ABROAD IN THE U.S.

Every year students from Carlow College, St. Patrick's take the opportunity to spend a semester studying abroad in the U.S.. We are involved in a number of scholarship and exchange programmes which enable our students to study at one of our partner Universities in the United States, St Ambrose in Davenport, Iowa and Francis Marion University in South Carolina. Whilst overseas you'll gain confidence and independence and experience an opportunity of a lifetime. You will take modules that fulfill your academic requirements here in Carlow College, St. Patrick's, so you will be ready to go straight into your next semester when you return. We encourage students to take advantage of a period of study at an overseas university as part of their degree to broaden horizons and experience a different way of life and study.





## Scholarships

Students accepted into the study abroad programme, are eligible for two scholarships:

The  
Jon Stauff  
Scholarship  
Fund

The Bishop  
James Davis  
Travel Prize

If you are interested in learning more about this amazing opportunity, please contact the Coordinator of the International Office,  
**Dr Eric Derr** for more information:  
[intloffice@carlowcollege.ie](mailto:intloffice@carlowcollege.ie).



# FIND US ONLINE AT...



*#ChooseCarlowCollege / [www.carlowcollege.ie](http://www.carlowcollege.ie)*



Carlow College, St. Patrick's hereby give notice that the particulars set out in this Prospectus are a general outline intended for the guidance and others and do not form part of a legal commitment or a contract. All course descriptions and details are given in good faith and believed to be correct at the time of printing. Some changes may be made during the Academic Year. Students and others should enquire as to the up-to-date position when such information is required. While every effort will be made to give due notice of major changes, the College reserves the right to suspend, alter or initiate courses, examinations and regulations at any time.





# CARLOW COLLEGE

ST. PATRICK'S

Carlow College, St. Patrick's College Street, Carlow, Ireland.

T: +353 (0)59 915 3200 | E: [info@carlowcollege.ie](mailto:info@carlowcollege.ie) | W: [www.CarlowCollege.ie](http://www.CarlowCollege.ie)



Ireland's EU Structural Funds  
Programmes 2007 - 2013

Co-funded by the Irish Government  
and the European Union



EUROPEAN REGIONAL  
DEVELOPMENT FUND